

# Stillbirth and infant mortality, West Midlands 1997-2005: Trends, Factors, Inequalities

## West Midlands Perinatal Institute

Authors & contributors:

Jason Gardosi, Nicola Beamish, Andre Francis, Mandy Williams  
Manjinder Sahota, Ann Tonks, Pat McGeown, Martin Hart

---

## Contents

1. Introduction
2. Trends in births, stillbirths and infant deaths
3. Causes and conditions
4. Postmortem rates
5. Maternal body mass index and stillbirth & infant mortality
6. Maternal age and stillbirth & infant mortality
7. Routine maternity data - Birmingham & Black Country
  - a. Demographics incl. ethnic distribution
  - b. Early Booking
  - c. Continuity of Carer
  - d. Detection of fetal growth restriction
  - e. Smoking in pregnancy
  - f. Breastfeeding initiation
8. Ethnic origin and perinatal mortality – B&BC
9. Community midwifery caseload & perinatal mortality – B&BC
10. Social Deprivation and stillbirths, perinatal and infant mortality rates
  - a. Regional Trends 1997-2005
  - b. West Midlands Map of Social Deprivation (IMD)
  - c. West Midlands Map of Stillbirth Rates
  - d. West Midlands Map of Infant Mortality Rates
  - e. Ward based rates for deprivation and mortality

## 1. Introduction

Stillbirth and infant mortality rates in the West Midlands continue to be consistently higher than those in England and Wales. Maternal and infant health is now high up on the government agenda and the time is right to address some of the associated problems that affect this region.

Recent national policy on services for mothers and infants pledges to improve access, choice and continuity of care by reconfiguring services whilst maintaining safety [1-4]. However inequalities and social deprivation have a significant impact upon adverse outcome, and represent challenges that have yet to be addressed [5-9]

### DEFINITIONS

**Stillbirth:** A child born from 24.0 weeks of pregnancy which did not, at any time after being completely expelled from its mother, breathe or show any other signs of life.

**Neonatal death:** Death within 28 days following live birth; *Early* = up to 7 days; *Late neonatal* = from 7 days up to 28 days.

**Infant death:** Death in the first year following live birth (includes early, late and post-neonatal).

**Perinatal death:** Fetal death after 24 completed weeks of gestation and neonatal death before day 7.

Data will be presented as rates for stillbirths and perinatal and infant deaths.

**Stillbirths** relate to pre-pregnancy, early and late pregnancy conditions and events which are primarily relevant to maternity care. However many of the same conditions also relate to subsequent adverse outcome.

**Perinatal deaths** include stillbirths and early neonatal deaths, and focuses on the adverse outcome affecting the viable fetus and the neonate to age 7 days. However 'preivable' births (<22 weeks, see Table 8.5) are currently also counted with early neonatal deaths.

**Infant deaths** (birth to age 1 year) are the indicator currently used in public service agreement (PSA) targets for reducing inequality / deprivation gaps. Most infant deaths occur in the first week of life (Figure 1.1).

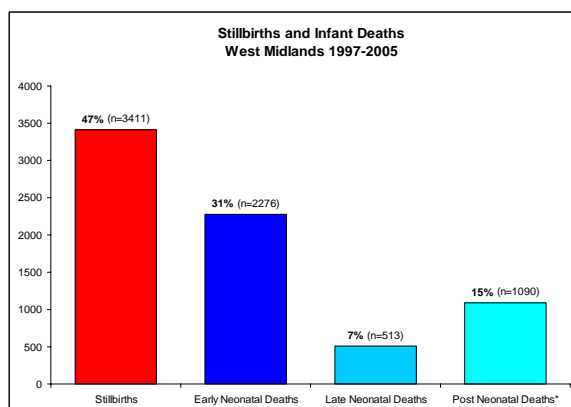


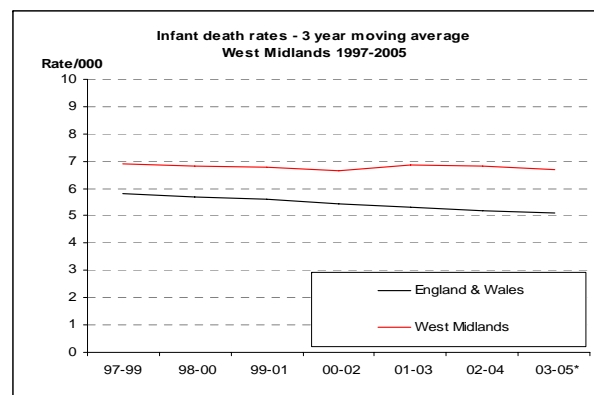
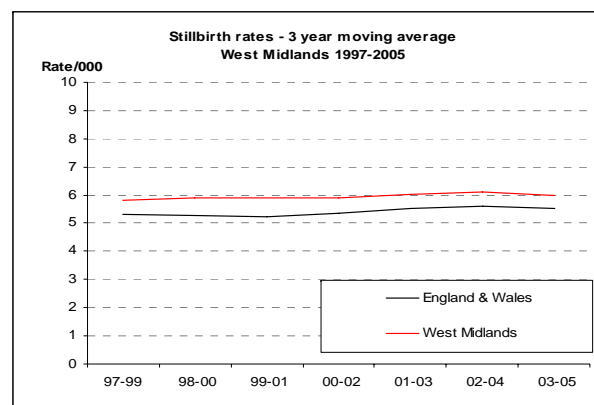
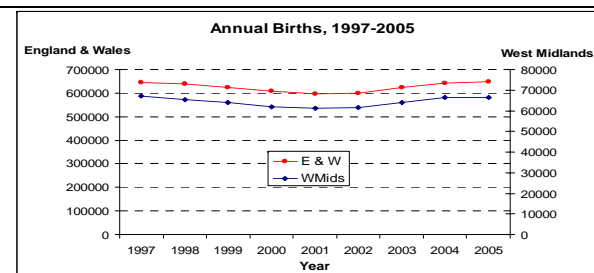
Figure 1.1

Relative proportions of Stillbirths and Early, Late and Post Neonatal deaths in West Midlands, 1997-2005.

1. Our Health, Our Care, Our Say: a new direction for Community Services. Department of Health, 2007  
[www.dh.gov.uk/prod\\_consum\\_dh/idcplg?IdcService=GET\\_FILE&dID=456&Rendition=Web](http://www.dh.gov.uk/prod_consum_dh/idcplg?IdcService=GET_FILE&dID=456&Rendition=Web)
2. Children's NSF – Maternity Standard - Department of Health, 2004  
[www.dh.gov.uk/prod\\_consum\\_dh/idcplg?IdcService=SS\\_GET\\_PAGE&siteId=en&ssTargetNodeId=566&ssDocName=DH\\_4089101](http://www.dh.gov.uk/prod_consum_dh/idcplg?IdcService=SS_GET_PAGE&siteId=en&ssTargetNodeId=566&ssDocName=DH_4089101)
3. Maternity Matters; Choice, access and continuity of care in a safe service. DoH 2007  
[www.dh.gov.uk/en/Publicationsandstatistics/Publications/PublicationsPolicyAndGuidance/DH\\_073312](http://www.dh.gov.uk/en/Publicationsandstatistics/Publications/PublicationsPolicyAndGuidance/DH_073312)
4. Making it better: For mother and baby - Department of Health, 2007  
[www.dh.gov.uk/prod\\_consum\\_dh/idcplg?IdcService=GET\\_FILE&dID=122842&Rendition=Web](http://www.dh.gov.uk/prod_consum_dh/idcplg?IdcService=GET_FILE&dID=122842&Rendition=Web)
5. Born Unequal : Why we need a progressive pre-birth agenda. The Fabian Society, 2007 Policy Report 61  
[www.fabians.org.uk/publications/policy/bamfield-prebirth-07/](http://www.fabians.org.uk/publications/policy/bamfield-prebirth-07/)
6. Recorded Delivery: a national survey of women's experience of maternity care. NPEU, 2007  
[www.npeu.ox.ac.uk/maternitysurveys/maternitysurveys\\_downloads/maternity\\_survey\\_report.pdf](http://www.npeu.ox.ac.uk/maternitysurveys/maternitysurveys_downloads/maternity_survey_report.pdf)
7. Tackling Health Inequalities: A programme for action - Department of Health 2003  
[www.dh.gov.uk/prod\\_consum\\_dh/idcplg?IdcService=GET\\_FILE&dID=10311&Rendition=Web](http://www.dh.gov.uk/prod_consum_dh/idcplg?IdcService=GET_FILE&dID=10311&Rendition=Web)
8. Review of Health Inequalities - Infant Mortality PSA Target . Department of Health, 2007  
[www.dh.gov.uk/prod\\_consum\\_dh/idcplg?IdcService=GET\\_FILE&dID=116196&Rendition=Web](http://www.dh.gov.uk/prod_consum_dh/idcplg?IdcService=GET_FILE&dID=116196&Rendition=Web)
9. Choosing Health for the West Midlands - Recommendations for Implementing Choosing Health and Achieving Health Equality: a Report of the Regional Director of Public Health. WM Government Office, 2006  
[www.gos.gov.uk/497745/docs/379127/482801/choosinghealth](http://www.gos.gov.uk/497745/docs/379127/482801/choosinghealth)

## 2. Trends in Births, Stillbirths and Infant Deaths - West Midlands and England and Wales 1997-2005

Births	1997	1998	1999	2000	2001	2002	2003	2004	2005
<b>Number</b>									
WMids	67,062	65,380	63,852	61,827	61,153	61,417	64,079	66,285	66,328
E & W	645,532	639,318	624,862	607,304	597,506	599,279	624,816	643,026	649,094
<b>Stillbirths</b> <th>1997</th> <th>1998</th> <th>1999</th> <th>2000</th> <th>2001</th> <th>2002</th> <th>2003</th> <th>2004</th> <th>2005</th>	1997	1998	1999	2000	2001	2002	2003	2004	2005
<b>Number</b>									
WMids	367	368	407	355	342	391	394	383	404
E & W	3439	3417	3283	3174	3146	3365	3565	3517	3473
<b>Rate (/1000)</b>									
WMids	5.5	5.6	6.4	5.7	5.6	6.4	6.1	5.8	6.1
E & W	5.3	5.3	5.3	5.2	5.3	5.6	5.7	5.5	5.4
<b>3 year moving average</b>									
WMids		5.8	5.9	5.9	5.9	6.0	6.1	6.0	
E & W		5.3	5.3	5.2	5.4	5.5	5.6	5.5	
<b>Infant deaths</b>	1997	1998	1999	2000	2001	2002	2003	2004	2005
<b>Number</b>									
WMids	472	430	445	421	390	407	477	419	418
E & W	3825	3605	3586	3366	3232	3144	3274	3234	3217
<b>Rate (/1000)</b>									
WMids	7.1	6.6	7.0	6.8	6.4	6.7	7.5	6.4	6.3
E & W	6.0	5.7	5.8	5.6	5.4	5.3	5.3	5.1	5.0
<b>3 year moving average</b>									
WMids		6.9	6.8	6.8	6.6	6.9	6.8	6.7	
E & W		5.8	5.7	5.6	5.4	5.3	5.2	5.1	

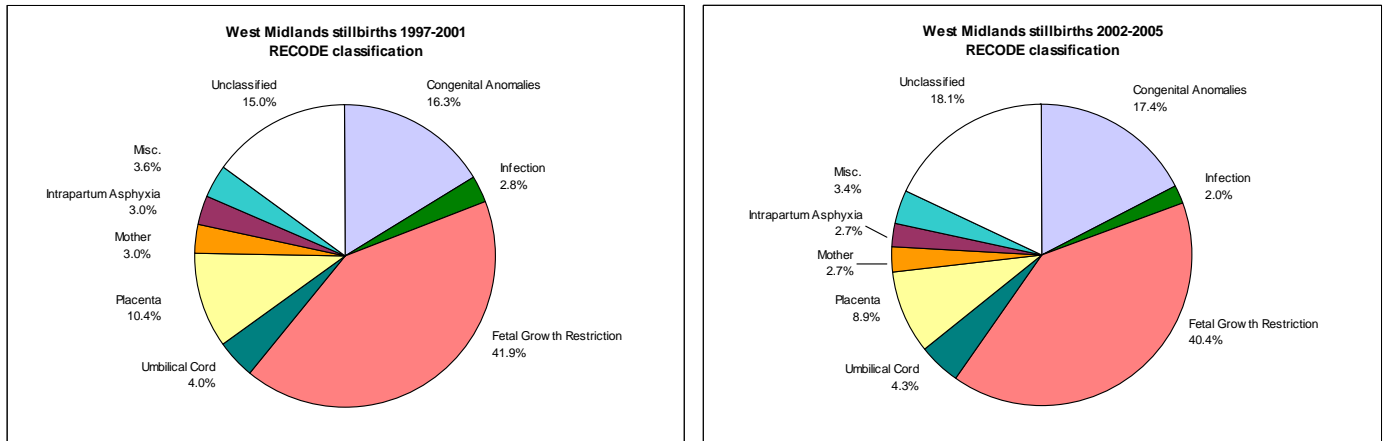


**Comment:** Stillbirths as well as infant death rates continue to be higher in the West Midlands than in England and Wales. The recent narrowing of the gap in stillbirth rates is not reflected in infant mortality rates, which have been consistently falling nationally but not in the West Midlands.

### 3. Causes and conditions associated with stillbirths and infant deaths

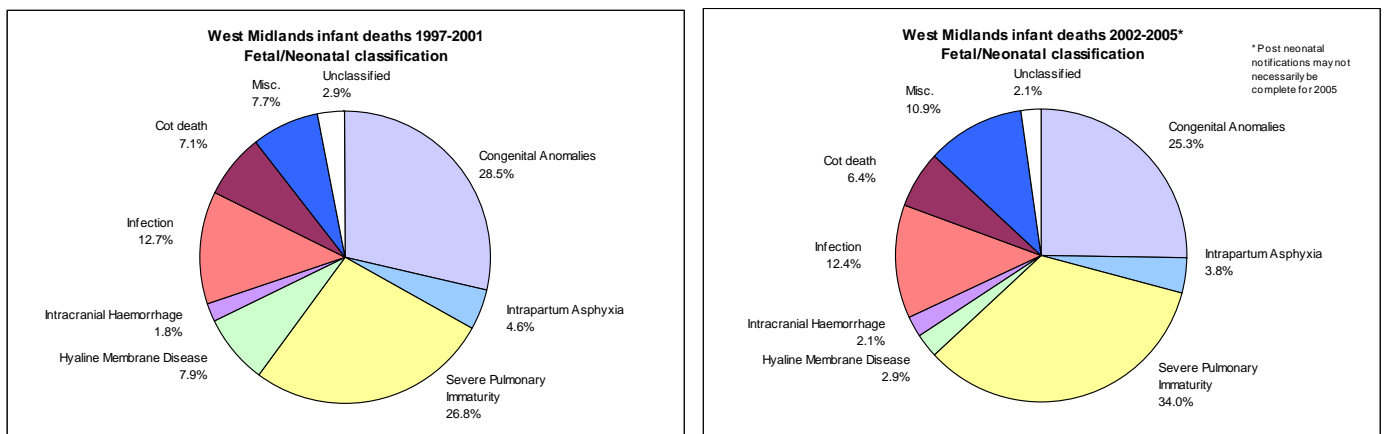
The figures below show the conditions associated with stillbirths and infant deaths, comparing two consecutive periods (1997-2001 and 2002-2005)

**Figures 3.1 a & b Stillbirths by ReCoDe, 1997-2001 and 2002-2005**



**Comment:** The relative proportion of conditions by ReCoDe classification was essentially the same for each period. Fetal growth restriction is the single largest category, accounting for over 40% of cases.

**Figures 3.2 a & b: Infant Deaths by Fetal & Neonatal Classification, 1997-2001 and 2002-2005**



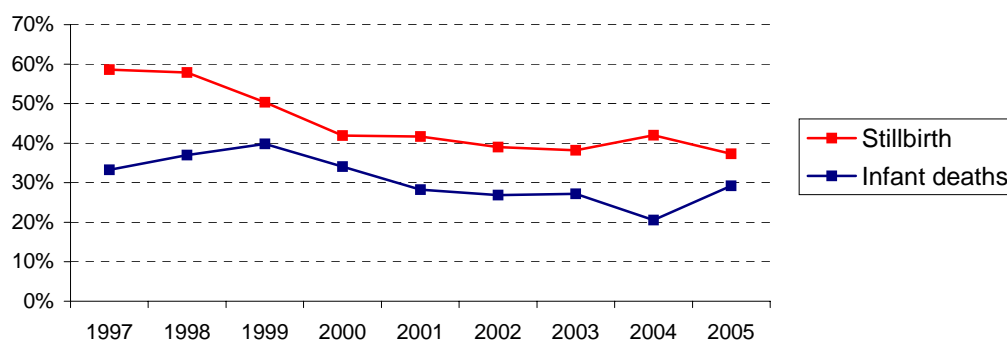
**Comment:** Deaths associated with pulmonary immaturity and congenital anomalies were the largest categories. There was a small reduction in the proportion of deaths with congenital anomalies (28.5 to 25.3%) The increase in deaths with pulmonary immaturity was accompanied by a relative reduction in cases with the related diagnosis of hyaline membrane disease.

*Note: The Perinatal Institute is about to complete work on a new classification system for neonatal & infant deaths (ReCoDe – NI), which takes account of antenatal factors preceding neonatal death.*

## 4. Postmortems

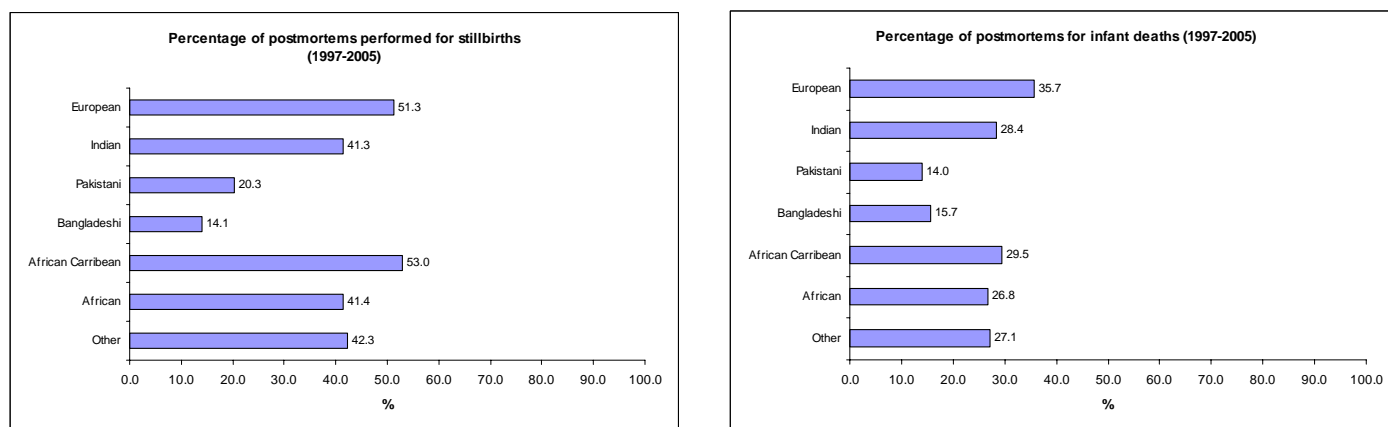
The West Midlands trend of postmortem rates for stillbirths and infant deaths is shown below

Figure 4.1: Proportion of deaths with postmortem - 1997-2005



Figures 4.2 a & b:

Proportion of post-mortems performed in different ethnic groups in a. stillbirths and b. infant deaths



**Comment :** After a recent fall, the West Midlands rate of postmortems is now running at a fairly steady rate of about 40% for stillbirths and 30% for infant deaths. The proportion of deaths which have a postmortem is lowest in the Pakistani and Bangladeshi populations.

## 5. Maternal Body Mass Index (BMI)

Information about maternal height and weight is collected in the regional perinatal death notification forms since 2004. As a preliminary analysis, we are using a B&BC - RPM derived distribution of BMI in the population (Section 7) to assess the maternal BMIs of stillbirths and infant deaths in the West Midlands in 2004-5.

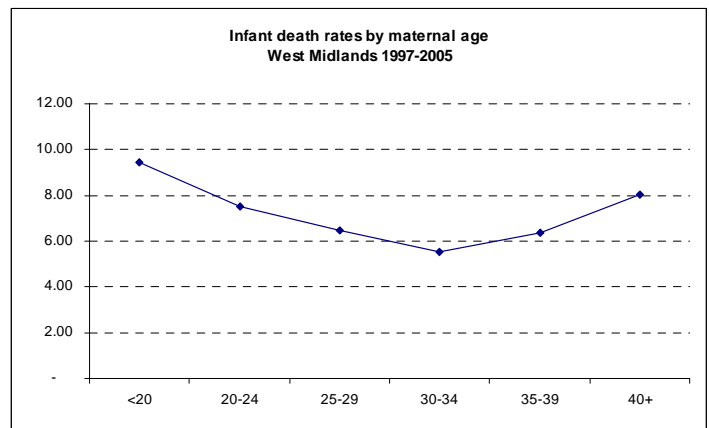
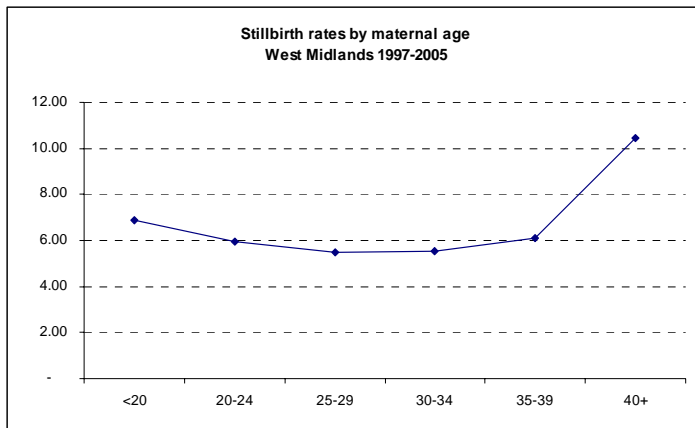
Table 5.1: Stillbirth and Infant Death rates in different BMI groups

BMI	STILLBIRTHS			INFANT DEATHS		
	Rate	Odds Ratio	95% CI	Rate	Odds Ratio	95% CI
<20	1.73	0.76	0.52 - 1.11	3.47	1.19	0.87 - 1.64
20-24.9	2.99	Reference		2.91	Reference	
25-29.9	3.59	1.20	0.95 - 1.51	2.54	0.87	0.68 - 1.13
30-34.9	4.51	<b>1.51</b>	<b>1.15 - 1.98</b>	4.18	<b>1.44</b>	<b>1.08 - 1.90</b>
35+	4.38	<b>1.46</b>	<b>1.05 - 2.05</b>	3.17	1.09	0.74 - 1.60

**Comment:** Obesity is associated with a significantly increased risk of stillbirth and infant deaths. Further work is required to ascertain the respective roles of conditions such as pre-eclampsia, prematurity, diabetes, and the antenatal detection of fetal growth restriction.

## 6. Maternal Age

Figures 6.1 a & b: Stillbirths and Infant deaths by maternal age group



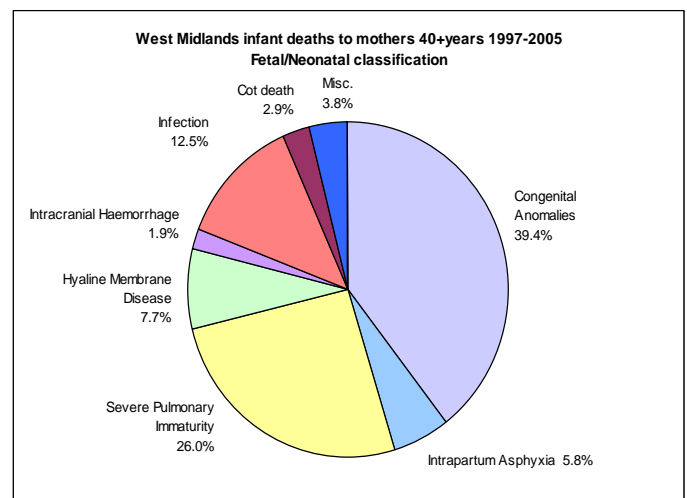
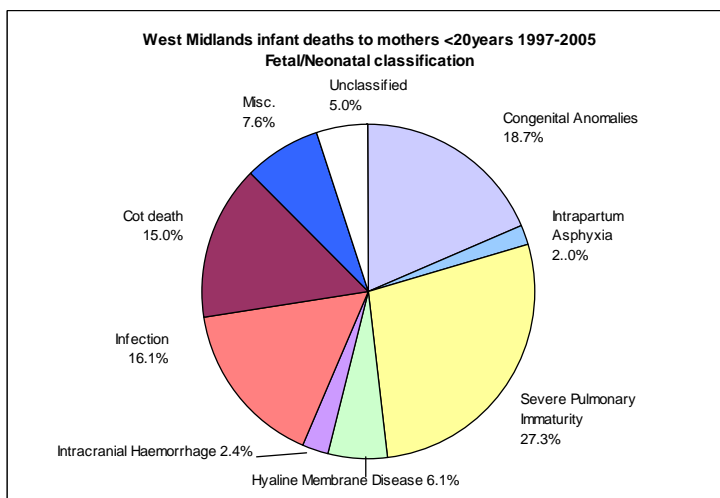
Tables 6.1 a & b:

Comparison of stillbirth and infant death rates by maternal age group (only significant groups included)

Stillbirths	Rate	OR	CI	Infant Deaths	Rate	OR	CI
<20	6.89	1.26	1.11-1.43	<20	8.02	1.47	1.32-1.64
25-29	5.48	Reference		30-34	5.52	Reference	
40+	10.45	1.92	1.60-2.30	40+	9.43	1.25	1.02-1.53

**Comment:** High as well as low maternal age is associated with an increased risk of stillbirth and infant death. For stillbirths, the lowest rate is for mothers aged 25-29; compared to this group, mothers aged <20 have a 26% greater risk, while those aged 40+ have a 92% increased risk. For infant deaths, the lowest risk is in age group 30-34; here the risk is increased by 47% for mothers <20, and by 25% for mothers aged 40+.

Figures 6.2 Causes of infant deaths in mothers aged a. <20 and b. 40+



**Comment:** The elevated risk of infant death associated with the extremes of maternal age is associated with different conditions. For teenage mothers, there is an increased risk of infant death associated with infection and cot death, while older mothers are more likely to have an infant death due to congenital anomaly. For stillbirths, the relative proportion of conditions is similar regardless of maternal age (graphs not shown).

## 7. Routine Maternity Data - Birmingham & Black Country

To address issues of high perinatal mortality, Primary Care Trusts within Birmingham and the Black Country initiated in 2004 the **Reducing Perinatal Mortality Project**. This project was designed to tackle perinatal mortality and inequalities, principally through enhancements in community maternity care. An Interim Report has since been published [1], and elements of this work are now being considered for extension to other units across the Region.

A major part of the project was to establish standardised data collection at the end of all pregnancies. A core dataset with 34 data items (see [www.pi.nhs.uk/rpnm/](http://www.pi.nhs.uk/rpnm/)) has been agreed and a web based tool has been implemented to collect data from all pregnancies. Most of the information is extracted from the hand held pregnancy notes.

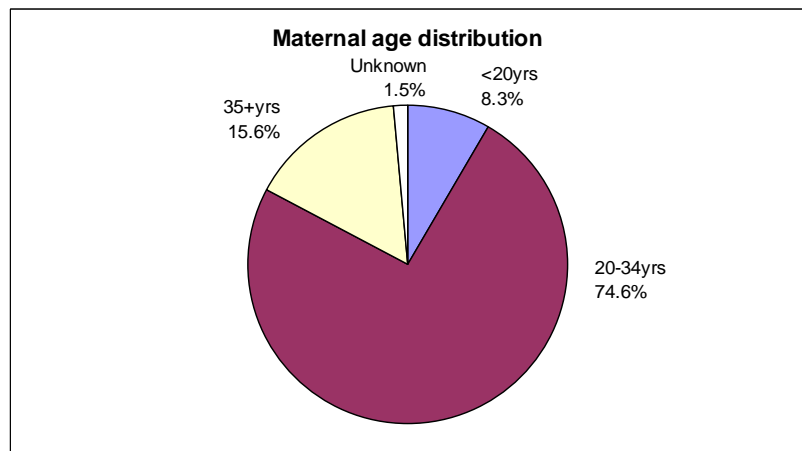
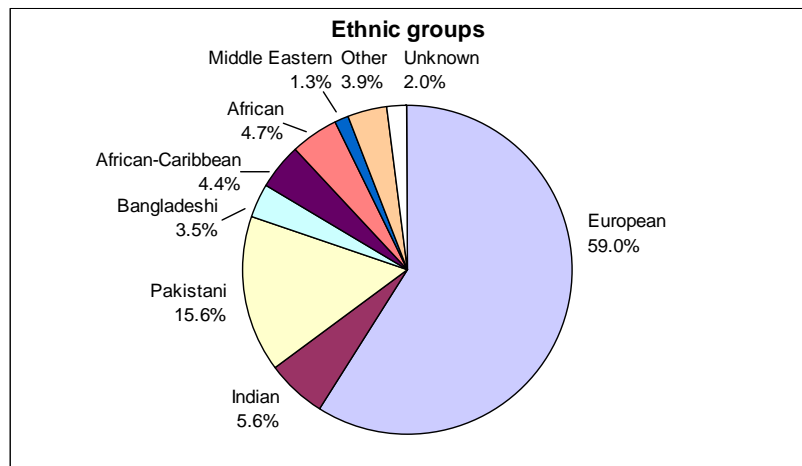
Despite shortages of funds for dedicated data clerks, this initiative has already been able to generate important health data not previously available. The data presented in the following tables were collected from all Birmingham and Black Country maternity units except New Cross and Solihull during October 2006. They provide baseline demographic data and information on 5 agreed key performance indicators (KPIs) for maternity care. Definitions for each of the KPIs are available on [www.pi.nhs.uk/rpnm/](http://www.pi.nhs.uk/rpnm/).

Table 7.1

Demographics		
Total number of births	n	2,529
Cases submitted	n	2,406
% of births submitted	%	95.1%

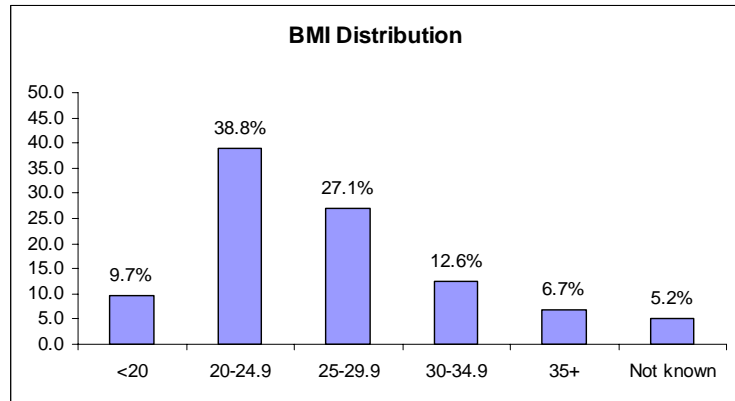
Ethnic origin		%
Afro-Caribbean		4.4
African		4.7
Asian		26.5
India	5.6	
Pakistan	15.6	
Bangladesh	3.5	
Other	1.8	
European		59.0
Middle East		1.3
Other / Mixed		2.1
NK/ND		2.0

Maternal Age (years)		%
<20		8.3
20-34 years		74.6
35+		15.6
Not Known		1.5
	Mean	28.5

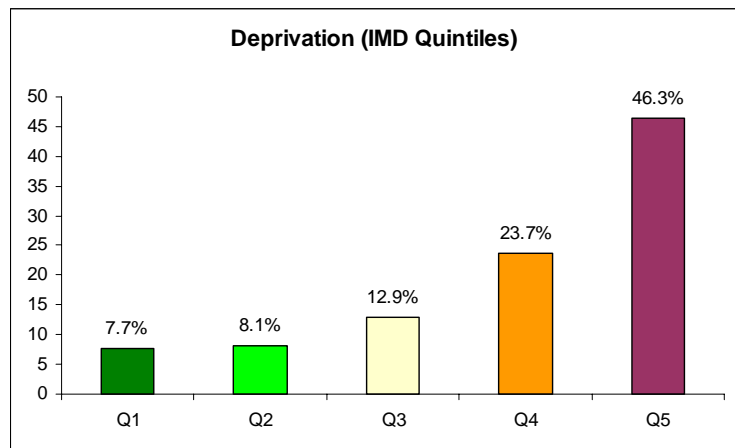


Demographics (contd.)	
Parity	%
Primipara	20.6
Multipara	32.3
Not Known	22.6

BMI	%
<20	9.7
20-24.9	38.8
25-29.9	27.1
30-34.9	12.6
35+	6.7
Not Known	5.2
Mean	26.2



Deprivation (IMD Quintile, Q)	Q	%
Least deprived	1	7.7
	2	8.1
	3	12.9
	4	23.7
Most deprived	5	46.3
	n/a	1.2



Fetal growth restriction	%
<10 <sup>th</sup> customised birthweight percentile	18.8

Gestation at birth	%
Premature (<37wks)	9.6

**Comment:**

- A high proportion of mothers in the B&BC live in deprived wards (IMD quintile 5: 46.3%).
- The incidence of fetal growth restriction (18.8%) is higher than that expected in a general NHS population (12%). Similarly, the prematurity rate is higher (9.6% vs 7.0 expected).
- The data allow us to establish baseline rates for the B&BC maternity population, such as the proportions of ethnic groups, which will improve our understanding of adverse outcomes. A preliminary analysis of ethnicity and stillbirths and infant deaths is presented in Section 8



Table 7.2

**Key Performance Indicator 1 :  
EARLY BOOKING (by 12 weeks)**
**(Target = 80%)**

Overall performance		
Submissions containing the necessary data	n	2,281
<b>Early booking (&lt;12 weeks gestation)</b>	%	<b>48.8</b>
Ethnic group		%
Afro-Caribbean		38.8
Asian		40.9
India		36.7
Pakistan		41.7
Bangladesh		48.1
Other		32.5
European		54.5
Maternal Age (years)		%
<20		40.5
20-34		50.4
35+		43.1
Parity		%
Primipara		50.3
Multipara		48.9

**Comment:**

- Early booking is essential for a good quality service, to ensure early engagement & assessment, and for informed choice about screening options and antenatal care in general.
- The data suggest that there is room for improvement. Less than half of all women were booked with the midwife within the first 12 weeks, falling well short of the target of 80%. This rate was even lower in Asian and Afro-Caribbean mothers.

Table 7.3

**Key Performance Indicator 2:  
CONTINUITY OF CARER**
**(Target = 75% with a named midwife)**

Overall performance		
Submissions containing the necessary data	n	2,204
<b>Continuity of carer &gt;75%</b>	%	<b>36.9</b>
Ethnic group		%
Afro-Caribbean		24.0
Asian		32.0
India		18.8
Pakistan		39.4
Bangladesh		19.5
Other		37.5
European		40.8
Maternal Age		%
<20		43.8
20-34		36.4
35+		36.7
Parity		%
Primipara		38.1
Multipara		36.8

**Comment:**

- This indicator is essential for ensuring continuity of carer, and care in general, and to enhance the chances that problems with mother or baby during and after pregnancy are detected.
- Only 36.9% of all mothers achieved the target of 75% of antenatal visits with the named care provider. Asians and Afro-Caribbeans once again fared worse than their European counterparts.

Table 7.4

**Key Performance Indicator 3:  
DETECTION OF FETAL GROWTH RESTRICTION**
**(Target = 60% detected)**

Overall performance		
Submissions containing the necessary data	n	2,324
IUGR at birth	%	18.6
<b>IUGR detected antenatally</b>	%	<b>27.3</b>

Ethnic group		%
Afro-Caribbean		30.4
Asian		33.0
India		35.7
Pakistan		33.9
Bangladesh		29.4
European		27.1

Maternal Age		%
<20		28.6
20-34		28.7
35+		18.2

Parity		%
Primipara		26.1
Multipara		27.8

Late booking		%
>12 weeks		27.6

BMI		%
<20		46.5
20-24.9		25.6
25-29.9		29.5
30-34.9		15.8
35+		36.7

**Comment:**

- Fetal growth restriction is the single largest category of conditions associated with stillbirth, and has many other adverse effects in the perinatal / neonatal period and beyond. Currently less than a third of fetuses with growth restriction are identified as such before birth.
- Detection of fetal growth restriction is poor in mothers aged 35+.
- Obesity makes clinical detection of fetal growth restriction more difficult. While mothers with the highest BMIs (35+) are likely to have serial ultrasound monitoring, the BMI 30-34 group has a significantly lower detection rate, and more intensive surveillance by ultrasound should also be considered for this group.
- The data suggest that fetal growth restriction is easier to detect in thin mothers.

Table 7.5

**Key Performance Indicator 4:  
SMOKING IN PREGNANCY**
**(Target = <15% by 2010)**

<b>Overall performance</b>		
Submissions containing the necessary data	n	2,326
Smoking at booking	%	17.7
<b>Still smoking at delivery</b>	%	<b>14.3</b>

<b>Ethnic group</b>		<b>%</b>
Afro-Caribbean		17.0
Asian		1.0
India		0.7
Pakistan		1.1
Bangladesh		1.2
Other		0.0
European		21.5

<b>Maternal Age</b>		<b>%</b>
<20		36.1
20-34		13.1
35+		8.4

<b>Parity</b>		<b>%</b>
Primipara		13.9
Multipara		14.8

<b>Other factors</b>		<b>%</b>
Late booking (>12 weeks)		13.8
Continuity of carer (>75%)		13.6

<b>Smoking related outcomes</b>		
<b>Premature - (&lt;37wks gestation)</b>		<b>%</b>
Non-smoking at booking		9.1
Still non-smoking at delivery		9.1
Smoking at booking		12.0
Still smoking at delivery		12.5
<b>Fetal growth restriction (&lt;10th centile)</b>		
Non-smoking at booking		17.2
Still non-smoking at delivery		17.2
Smoking at booking		25.1
Still smoking at delivery		26.3
<b>Breastfeeding initiated</b>		
Non-smoking at booking		61.6
Still non-smoking at delivery		61.2
Smoking at booking		35.4
Still smoking at delivery		33.8

**Comment:**

- There is wide ethnic variation in smoking in pregnancy, and the overall rate would be substantially higher if it was not for the low rates reported by Asian mothers.
- A high proportion of teenagers smoke during pregnancy. Mothers who smoke during pregnancy have a substantially increased risk of premature birth (12.5%) and fetal growth restriction (26.3%).
- Mothers who still smoke at the end of pregnancy are less likely to breastfeed (33.8%).

Table 7.6

**Key Performance Indicator 5:  
BREASTFEEDING INITIATION**

(Target = rate increased by 2% p/a)

Overall performance		
Submissions containing the necessary data	n	2,213
<b>Breastfeeding initiated</b>	%	<b>57.0</b>

Ethnic group		%
Afro-Caribbean		77.6
Asian		60.8
India		72.1
Pakistan		54.6
Bangladesh		60.8
Other		78.0
European		50.5

Maternal Age		%
<20		41.4
20-34		56.3
35+		69.9

Parity		%
Primipara		62.8
Multipara		52.5

Other factors		%
Late booking (>12 weeks)		57.8
Smoking at delivery		34.9

**Comment:**

- Just over half of all mothers commence breastfeeding.
  - The rate is lowest in European-British mothers
  - Teenagers and women who smoke are much less likely to initiate breastfeeding.
- (Note: This data can only provide information about initiation immediately after birth)

## 8. Ethnic Origin and stillbirths, perinatal & infant deaths Birmingham and the Black Country 1997-2005

The Birmingham and Black Country maternity data project (Section 7) has established denominator data which, for the first time, allows comparisons for adverse outcome between ethnic groups. In the following tables, the current B&BC ethnic distribution (Table 7.1) is applied to compare relative rates of stillbirths, perinatal and infant deaths from the same units from which the baseline maternity data was collected, averaged for 1997-2005. We have excluded smaller population groups (Bangladesh, Middle East) and those with significant recent population shifts (Africa).

### 8.1 Stillbirths

	Stillbirths	Rate	Odds ratio	95% CI
African Caribbean	128	11.72	<b>1.92</b>	1.59 - 2.31
European	897	6.13	Reference	
Indian	117	8.41	<b>1.37</b>	1.13 - 1.67
Pakistani	396	10.25	<b>1.68</b>	1.49 - 1.89

### 8.2 Perinatal Deaths

	Perinatal deaths	Rate	Odds ratio	95% CI
African Caribbean	214	19.59	<b>1.82</b>	1.58 - 2.10
European	1588	10.86	Reference	
Indian	198	14.23	<b>1.32</b>	1.13 - 1.53
Pakistani	679	17.57	<b>1.63</b>	1.49 - 1.78

### 8.3. Infant Deaths

	Infant deaths	Rate	Odds ratio	95% CI
African Caribbean	143	13.25	<b>1.71</b>	1.43 - 2.04
European	1133	7.80	Reference	
Indian	129	9.35	<b>1.20</b>	1.00 - 1.44
Pakistani	497	12.99	<b>1.68</b>	1.51 - 1.86

**Comment:** Compared to mothers of European-British origin, babies of African Caribbean, Pakistani and Indian mothers are at significantly increased risk in each mortality category.

#### 8.4 Infant deaths with lethal congenital anomalies

	Death with anomaly	Rate	Odds ratio	95% CI
African Caribbean	17	1.57	0.84	0.51 - 1.36
European	274	1.89	Reference	
Indian	50	3.62	<b>1.93</b>	1.42 - 2.60
Pakistani	236	6.17	<b>3.29</b>	2.76 - 3.91

**Comment:** Compared to Europeans, Pakistani and Indian mothers have significantly higher rates of infant deaths with lethal congenital anomalies. This does not extend to African Caribbean mothers.

#### 8.5 Pre-viable Infant Deaths (<22 weeks gestation)

Deaths in neonates are recorded regardless of gestational age, as long as there has been an observation of 'signs of life'. However some fetuses are born at such early gestations that survival is extremely unlikely. By consensus, 22 weeks is considered a 'pre-viable' cut-off, i.e. the gestation before which survival of a newborn is extremely unlikely. We have recently reported that 16.5% of all Early Neonatal Deaths in the West Midlands fall into this category, and that our rate of pre-viable births is higher than that of any other NHS Region [\[www.pi.nhs.uk/pnm/Update2006.pdf\]](http://www.pi.nhs.uk/pnm/Update2006.pdf)

	END <22wks	Rate	Odds ratio	95% CI
African Caribbean	28	2.59	<b>3.70</b>	2.44 - 5.63
European	102	0.70	Reference	
Indian	15	1.09	1.55	0.90 - 2.67
Pakistani	62	1.62	<b>2.31</b>	1.69 - 3.17

**Comment:** There is a strong link between pre-viable birth and ethnic group, with African Caribbean and Pakistani mothers having substantially higher rates than Europeans. Further investigation is underway to try to understand the underlying reasons for these differences.

#### 8.6 Infant Deaths excluding anomalies and pre-viable births

	22+ wks, no CA	Rate	Odds ratio	95% CI
African Caribbean	95	8.80	<b>1.69</b>	1.36 - 2.09
European	761	5.24	Reference	
Indian	67	4.86	0.93	0.72 - 1.19
Pakistani	200	5.23	1.00	0.85 - 1.17

**Comment:** After exclusion of lethal anomalies and 'pre-viable' early neonatal deaths, Pakistani and Indian mothers have no increased risk of infant death compared to their European counterparts. Infants of African Caribbean mothers on the other hand continue to have a significantly increased risk.

## 9. Perinatal mortality and community midwifery caseloads: a preliminary analysis

The key performance indicators agreed in the Birmingham & Black Country project relate, to a large extent, to maternity care which is carried out in primary / community based settings. A recent report commissioned by Heart of Birmingham Teaching PCT observed community midwifery caseloads of around 150 [1]. While there is currently no national guidance on the number of safe caseloads for community midwifery, the professional consensus is that deprived areas require more staff than others, and that a safe average caseload is about 110, while for deprived areas it should not be more than 100. In the Bellevue project [2], an enhanced community service was piloted in an area of high deprivation, which resulted in a caseload of approx 70-90. While this 2 year pilot based at one health centre was too small to look at perinatal outcomes, it did demonstrate significant improvements in several key process indicators of maternity care.

The Perinatal Institute, in association with the regional Heads of Midwifery, is undertaking an urgent mapping exercise of community caseloads in the Region. Such information is currently not readily available at ward level, and requires consideration of where community midwifery teams are based and the various patterns in which they operate.

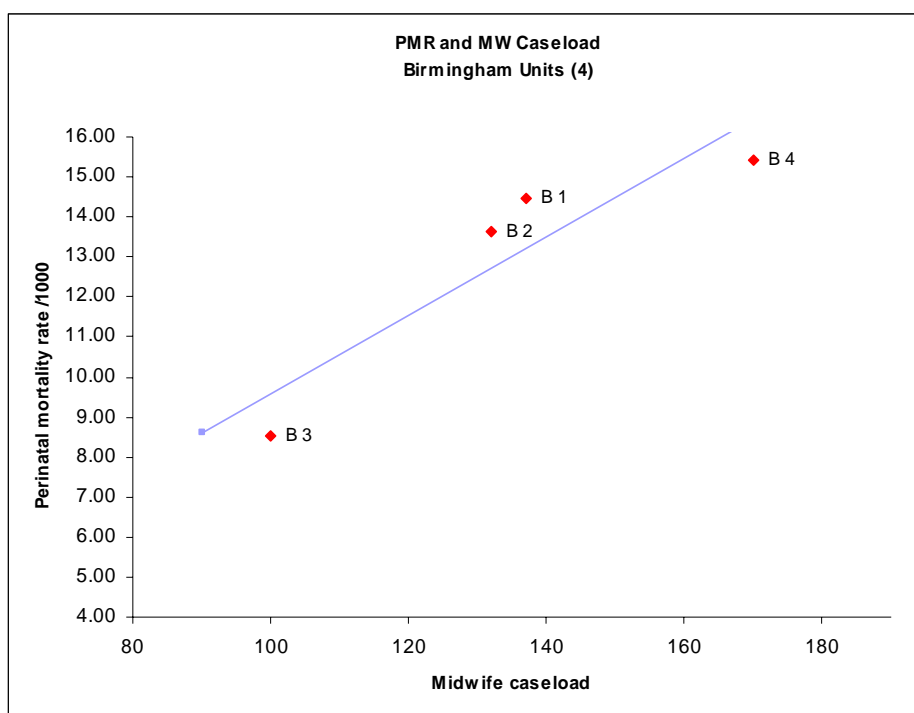
A preliminary survey of Heads of Midwifery was conducted in May 2007, to ascertain the unit based community midwifery caseloads in December 2006. The results are listed below for maternity units in Birmingham (4) and the Black Country (4), and correlated with the each unit's perinatal mortality rate averaged for 1997-2005.

Table & Figure 9.1.

Estimated community midwifery caseload and perinatal mortality rate - Birmingham units.

### Birmingham 1997-2005

Unit	Births	Deaths	Perinatal Mortality Rate	Community Midwifery Caseload - Dec 2006
B1	50929	736	14.45	137
B2	26174	357	13.64	132
B3	24383	208	8.53	100
B4	38035	586	15.41	170



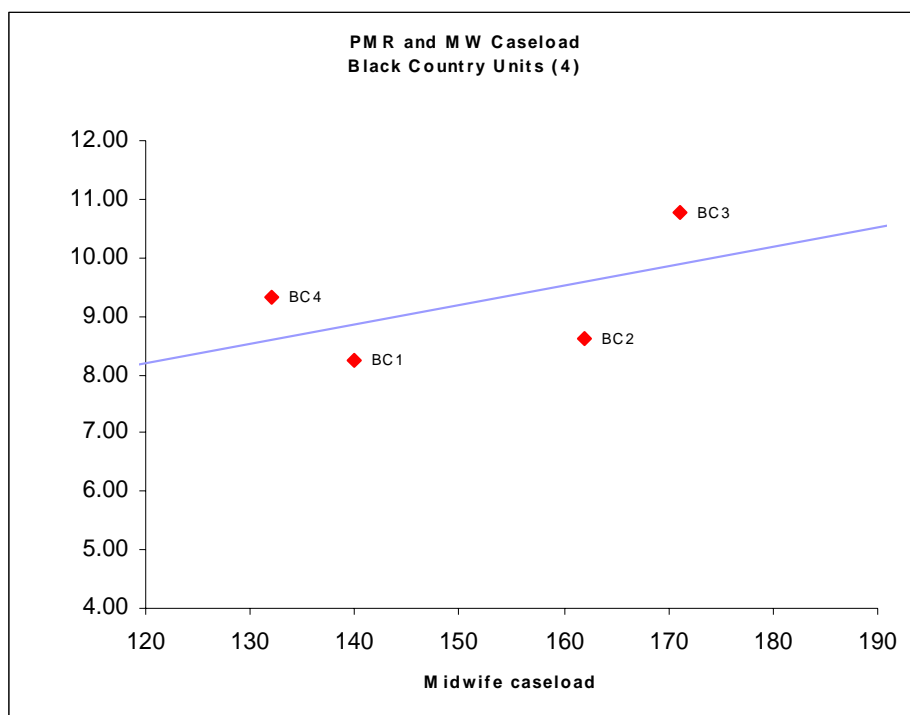
Correlation: R = 0.92, NS

Table & Figure 9.2

Estimated community midwifery caseload and perinatal mortality rate - Black Country units.

**Black Country 1997-2005**

Unit	Births	Deaths	Perinatal Mortality Rate	Community Midwifery Caseload - Dec 2006
BC1	31279	258	8.25	140
BC2	28557	246	8.61	162
BC3	28400	306	10.77	171
BC4	20416	190	9.31	132



Correlation: R = 0.55, NS

**Comment:**

Linear regression lines are shown to indicate trends, although there are too few data points for the correlation to achieve statistical significance. The caseload figures are a snapshot and not necessarily representative for the years for which each unit's perinatal mortality is averaged. Also, the apparent relationship between high caseload and mortality is not necessarily causal.

Nevertheless, these preliminary findings do show that several areas with high perinatal mortality rates have very high community midwifery caseloads. This may hinder the improvements needed to reduce the high perinatal / infant death rates in the areas of greatest need. The high caseload may also provide difficulties when trying to achieve the service enhancements promised in 'Maternity Matters' [3]

1. Mapping community midwifery in Birmingham. PMA Associates, 2005 [www.pi.nhs.uk/rpnm/PMA\\_Bham\\_report.pdf](http://www.pi.nhs.uk/rpnm/PMA_Bham_report.pdf),
2. PC-Aims: The Bellevue Project. Perinatal Institute 2003. [www.pi.nhs.uk/pc-aims/PC%20Aims%20Report1.pdf](http://www.pi.nhs.uk/pc-aims/PC%20Aims%20Report1.pdf),
3. Maternity Matters - DH 2007 [www.dh.gov.uk/en/Publicationsandstatistics/Publications/PublicationsPolicyAndGuidance/DH\\_073312](http://www.dh.gov.uk/en/Publicationsandstatistics/Publications/PublicationsPolicyAndGuidance/DH_073312)



## 10. Social Deprivation and stillbirths, perinatal and infant mortality

### a. Regional Trends

The following tables and graphs illustrate 3 year moving averages for mortality rates by deprivation score (Index of Multiple Deprivation, IMD 2004). Quintile 5 (Q5, lowest = most deprived) is compared with Q 1-4. (NB: IMD is an area based score and is preferred to the ONS Socio-Economic Classification applied in the PSA targets. The latter is often not accurately recorded and furthermore does not include single mothers, nor maternal ethnic group, but only mother's country of birth.)

Table & Figure 10.1:  
**Stillbirths**

	IMD Q5	All	IMD Q1-4
1997-1999	7.2	5.8	5.2
1998-2000	7.1	5.9	5.4
1999-2001	7.3	5.9	5.3
2000-2002	7.4	5.9	5.2
2001-2003	8.2	6.0	5.1
2002-2004	8.5	6.1	5.0
2003-2005	8.2	6.0	5.0

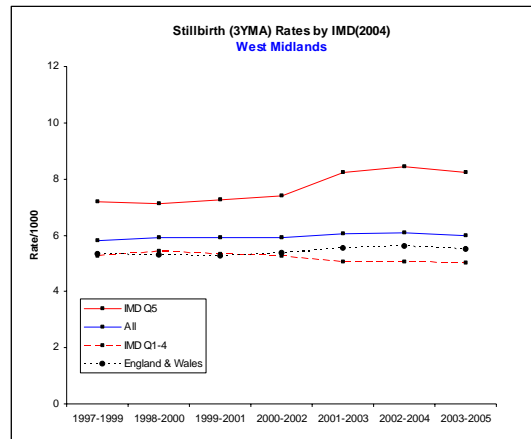


Table & Figure 10.2:  
**Perinatal Deaths**

	IMD Q5	All	IMD Q1-4
1997-1999	12.3	9.8	8.8
1998-2000	12.2	9.8	8.8
1999-2001	12.3	9.7	8.6
2000-2002	12.8	9.7	8.4
2001-2003	13.9	9.9	8.1
2002-2004	14.3	10.0	8.2
2003-2005	14.0	10.0	8.3

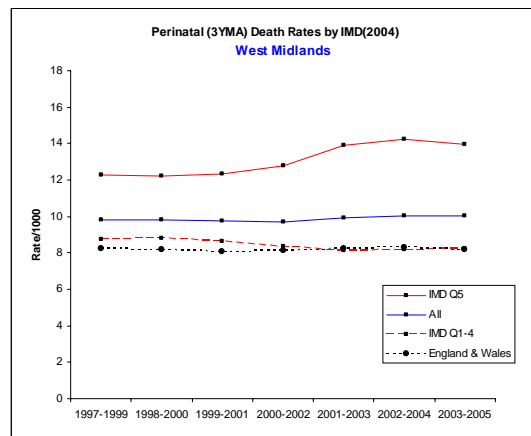
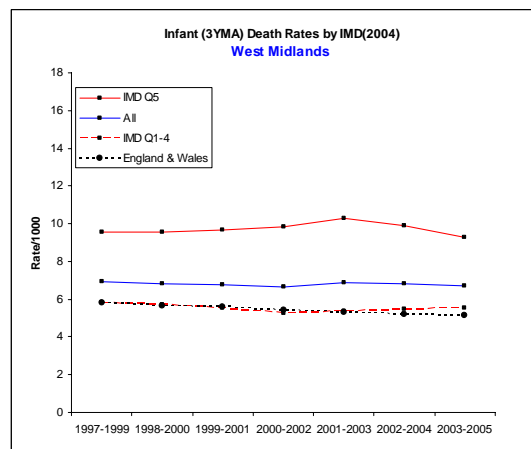


Table & Figure 10.3:  
**Infant Deaths**

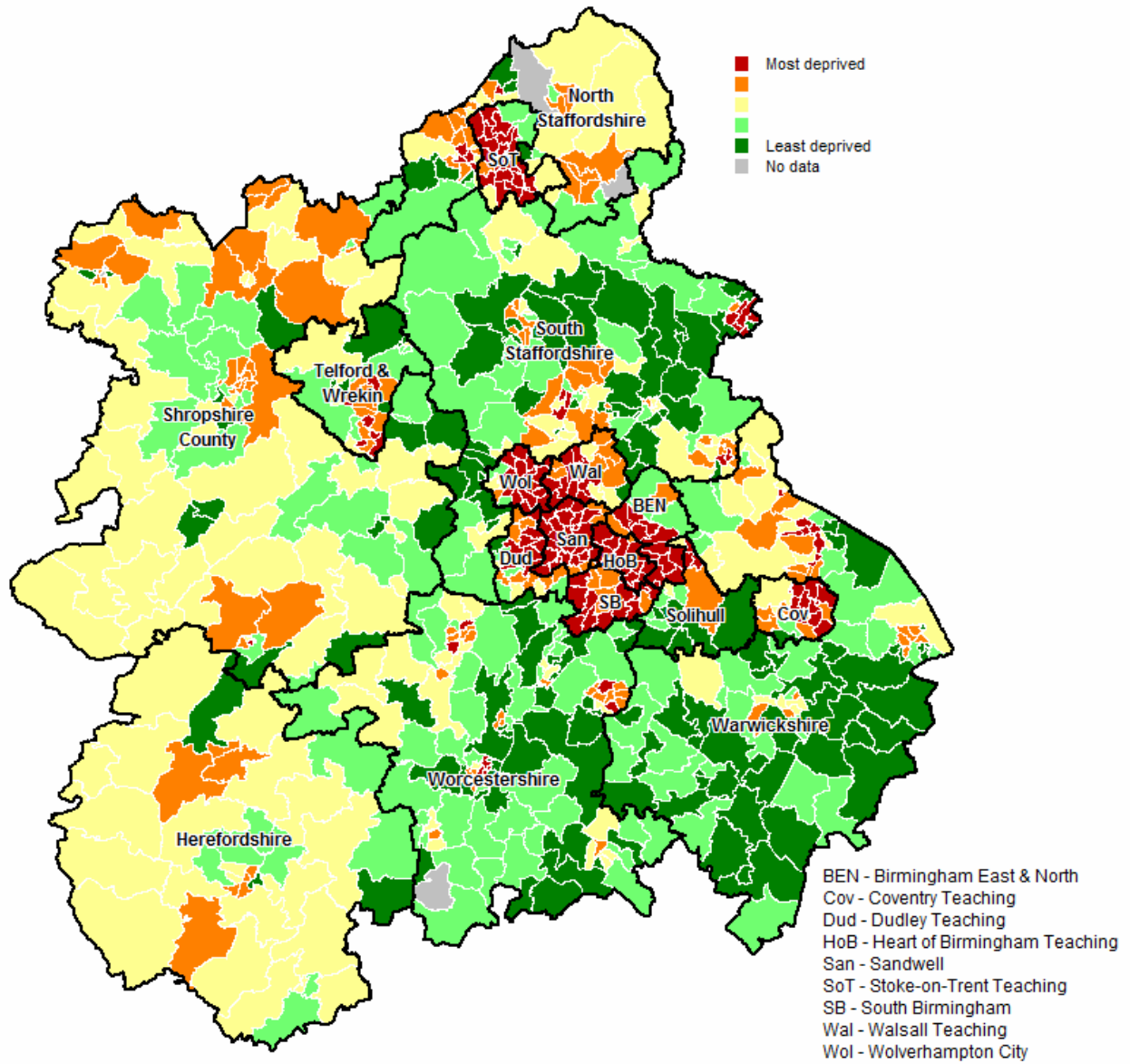
	IMD Q5	All	IMD Q1-4
1997-1999	9.6	6.9	5.8
1998-2000	9.6	6.8	5.7
1999-2001	9.7	6.8	5.5
2000-2002	9.9	6.6	5.2
2001-2003	10.3	6.9	5.3
2002-2004	9.9	6.8	5.5
2003-2005	9.3	6.7	5.6



**Comment:** For stillbirth and perinatal mortality rates, the gap between most deprived and the rest of the population has been increasing in recent years. For infant mortality, there appears to be a narrowing in the last triennium to levels similar to 1997-1999; this is associated with a reduction in the IMD gap in post-neonatal deaths (not shown).

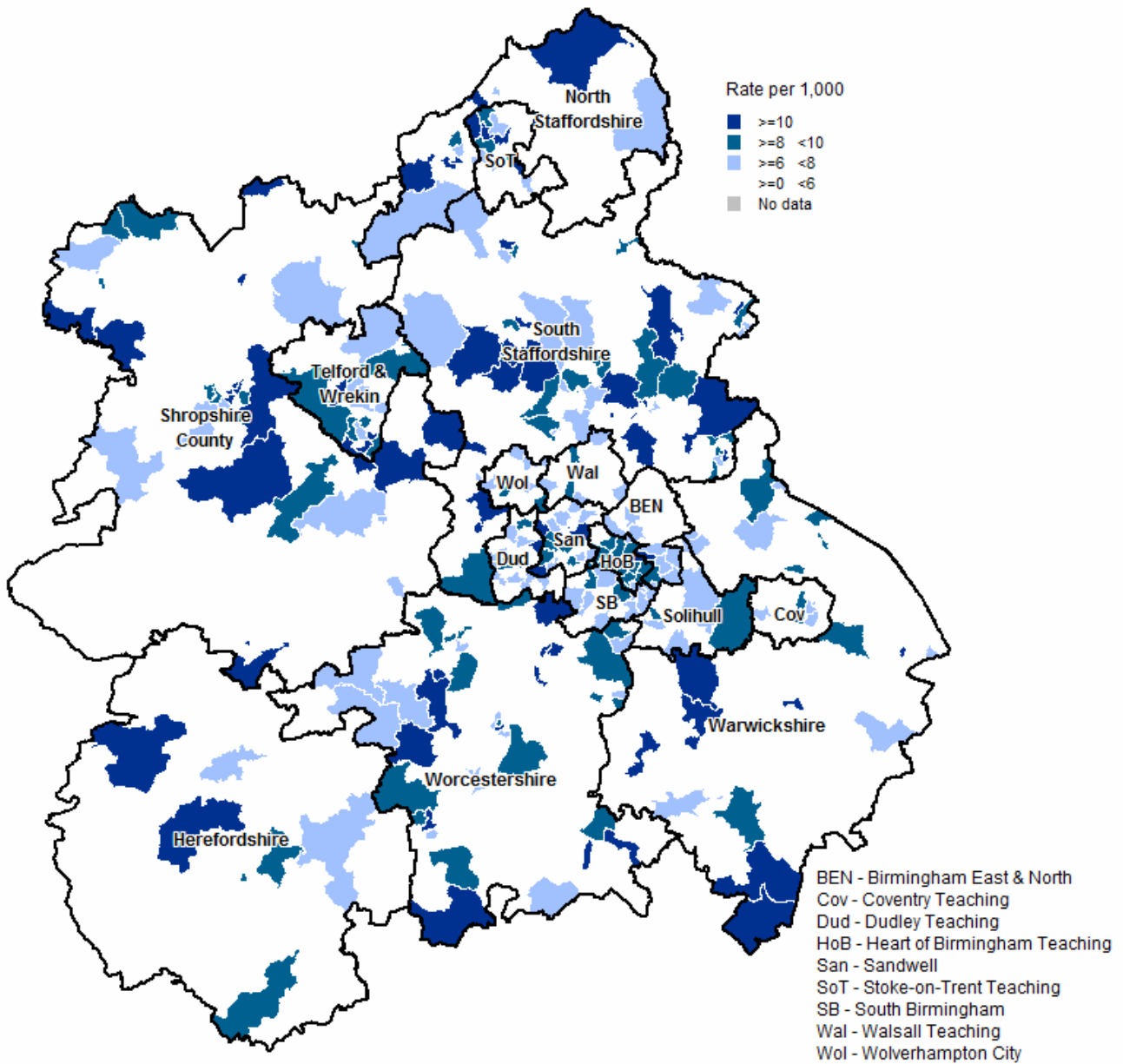
## 10 b West Midlands Map of Social Deprivation by Ward 2004

Most deprived = Quintile 5 of IMD (Index of Multiple Deprivation, 2004); least deprived = Quintile 1



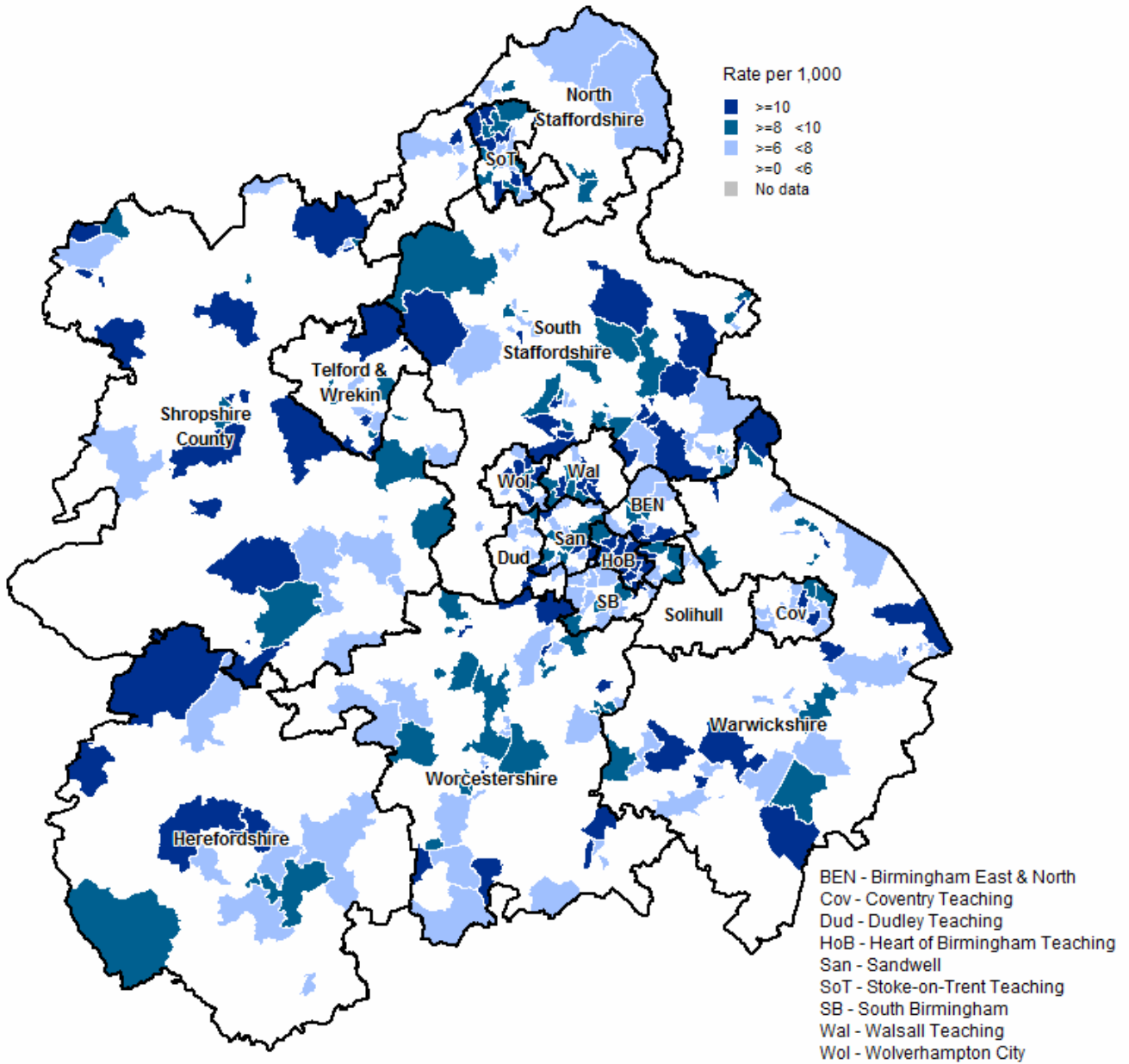
(Map boundaries from Ordnance Survey, with permission from Controller of Her Majesty's Stationery Office © Crown copyright 2007)

10 c West Midlands Map of Stillbirth Rates (1997-2005) by Ward 2004



(Map boundaries from Ordnance Survey, with permission from Controller of Her Majesty's Stationery Office © Crown copyright 2007)

**10 d West Midlands Map of Infant Mortality (1997-2005) by Ward 2004**



(Map boundaries from Ordnance Survey, with permission from Controller of Her Majesty's Stationery Office © Crown copyright 2007)

## 10 e. Deprivation, Stillbirth, Perinatal and Infant Mortality 1997-2005

West Midlands PCTs and Wards (2004), Index of Multiple Deprivation (IMD) Scores and Quintiles, and average Rates for Stillbirths (SBR), Perinatal Mortality (PMR) and Infant Mortality (IMR)

PCT and Ward	IMD Score	IMD Quintile	SBR	PMR	IMR
<b>Birmingham East and North PCT</b>	<b>42.40</b>	<b>5</b>	<b>7.3</b>	<b>12.2</b>	<b>8.6</b>
Acocks Green	39.63	5	7.9	13.4	7.6
Bordesley Green	50.28	5	9.8	15.6	10.1
Erdington	40.63	5	4.5	7.2	7.2
Hodge Hill	41.88	5	6.4	11.3	9.3
Kingstanding	53.03	5	6.1	9.3	8.1
Oscott	29.04	5	5.0	7.6	3.8
Shard End	51.47	5	6.8	12.7	9.8
Sheldon	33.52	5	7.1	12.0	8.5
South Yardley	42.30	5	9.6	14.5	7.8
Stechford and Yardley North	44.48	5	6.9	10.5	5.9
Stockland Green	41.15	5	6.9	13.8	10.1
Sutton Four Oaks	10.64	2	4.7	8.8	6.5
Sutton New Hall	13.05	2	4.7	6.2	2.1
Sutton Trinity	21.42	4	4.8	7.7	6.3
Sutton Vesey	13.81	3	1.6	6.0	9.3
Tyburn	44.74	5	5.6	12.0	10.6
Washwood Heath	62.17	5	10.6	17.0	12.4
<b>Coventry Teaching PCT</b>	<b>33.51</b>	<b>5</b>	<b>5.6</b>	<b>10.2</b>	<b>7.6</b>
Bablake	17.08	3	2.3	4.6	3.8
Binley and Willenhall	47.33	5	4.3	8.6	7.7
Cheylesmore	20.97	4	5.6	7.7	2.8
Earlsdon	12.61	2	1.7	1.7	0.9
Foleshill	50.56	5	8.3	15.5	12.0
Henley	45.60	5	6.7	11.8	8.3
Holbrook	29.11	5	5.6	10.2	7.2
Longford	40.10	5	4.4	10.6	9.3
Lower Stoke	38.61	5	7.5	14.6	11.8
Radford	35.97	5	4.4	10.3	7.9
Sherbourne	24.84	4	4.7	8.8	6.5
St Michael's	48.82	5	7.9	11.6	7.5
Upper Stoke	33.32	5	7.3	9.7	7.8
Wainbody	8.84	1	5.9	11.7	5.9
Westwood	26.32	4	5.2	8.6	6.4
Whoberley	17.97	3	1.4	4.7	4.8
Woodlands	18.72	4	6.0	9.4	6.8
Wyken	21.47	4	4.5	10.2	6.8
<b>Dudley PCT</b>	<b>25.44</b>	<b>4</b>	<b>6.1</b>	<b>8.7</b>	<b>5.3</b>
Amblecote	13.20	2	1.4	2.2	5.1
Belle Vale	25.38	4	7.3	8.8	3.0
Brierley Hill	33.55	5	8.9	11.7	5.1
Brockmoor and Pensnett	33.86	5	4.5	7.1	5.8
Castle and Priory	36.30	5	3.1	6.3	6.3
Coseley East	28.37	5	4.3	8.6	8.6
Cradley and Foxcote	26.86	4	7.4	12.3	10.5
Gornal	22.32	4	7.7	10.3	6.9
Halesowen North	21.82	4	4.1	6.5	6.5
Halesowen South	10.93	2	2.6	2.6	1.3
Hayley Green and Cradley South	15.39	3	2.2	5.6	5.6
Kingswinford North and Wall Heath	9.53	1	5.2	5.2	2.1
Kingswinford South	12.80	2	6.8	6.8	4.6
Lye and Wollescote	24.94	4	6.7	8.0	4.3
Netherton; Woodside and St Andrews	34.54	5	6.2	8.4	6.2
Norton	11.40	2	4.8	6.0	3.6
Pedmore and Stourbridge East	17.79	3	3.4	5.6	5.6
Quarry Bank and Dudley Wood	28.73	5	4.4	5.2	2.2
Sedgley	18.52	4	4.6	8.0	3.5
St James's	31.21	5	7.8	10.4	5.9
St Thomas's	39.89	5	12.4	15.1	3.7
Upper Gornal and Woodsetton	25.18	4	9.8	14.7	6.6
Wollaston and Stourbridge Town	18.95	4	6.0	10.3	5.2
Wordsley	14.30	3	7.5	12.5	5.0
<b>Heart of Birmingham Teaching PCT</b>	<b>53.47</b>	<b>5</b>	<b>8.6</b>	<b>14.5</b>	<b>10.7</b>
Aston	58.28	5	8.2	14.1	10.0
Handsworth Wood	37.32	5	6.0	11.7	9.5
Ladywood	57.62	5	9.7	17.0	10.3
Lozells and East Handsworth	58.98	5	8.8	14.0	10.1
Nechells	62.17	5	8.9	14.7	10.2
Perry Barr	27.49	4	7.7	10.6	6.7
Soho	57.69	5	9.6	17.0	12.9
Sparkbrook	57.86	5	9.7	16.0	11.9
Springfield	43.30	5	7.8	13.9	12.1

PCT and Ward	IMD Score	IMD Quintile	SBR	PMR	IMR
<b>Herefordshire PCT</b>	<b>17.21</b>	<b>3</b>	<b>4.4</b>	<b>6.6</b>	<b>4.3</b>
Aylestone	19.79	4	2.3	4.5	2.3
Backbury	16.20	3	0.0	8.7	8.7
Belmont	28.14	4	5.8	7.8	3.9
Bircher	9.79	1	0.0	6.5	6.5
Bringsty	12.56	2	4.7	4.7	4.7
Bromyard	17.35	3	0.0	2.0	3.9
Burghill; Holmer and Lyde	11.71	2	0.0	0.0	0.0
Castle	15.03	3	5.2	5.2	0.0
Central	27.26	4	0.0	0.0	0.0
Credenhill	12.36	2	3.2	6.5	6.5
Frome	17.56	3	6.5	6.5	6.5
Golden Cross with Weobley	18.01	4	4.7	4.7	0.0
Golden Valley North	16.20	3	0.0	5.4	5.4
Golden Valley South	15.21	3	4.5	9.0	9.0
Hagley	11.78	2	0.0	3.1	6.3
Hampton Court	15.49	3	0.0	0.0	0.0
Hollington	17.75	3	0.0	0.0	6.9
Hope End	11.21	2	0.0	2.9	2.9
Kerne Bridge	13.72	2	0.0	4.0	4.0
Kington Town	16.70	3	0.0	3.8	11.4
Ledbury	10.19	1	4.8	4.8	1.2
Leominster North	22.71	4	4.7	6.2	3.1
Leominster South	21.38	4	6.2	8.3	2.1
Llangarron	14.04	3	8.5	12.7	4.3
Mortimer	15.34	3	3.7	14.9	11.2
Old Gore	14.84	3	4.2	4.2	0.0
Pembridge and Lyonshall with Titley	15.11	3	12.8	12.8	0.0
Penyard	14.85	3	4.4	4.4	0.0
Pontrilas	14.68	3	0.0	0.0	0.0
Ross-on-Wye East	11.31	2	3.3	6.6	6.6
Ross-on-Wye West	14.99	3	3.6	3.6	0.0
St Martins and Hinton	22.44	4	10.3	12.6	4.8
St Nicholas	16.43	3	5.2	6.9	3.5
Stoney Street	16.23	3	4.9	4.9	4.9
Sutton Walls	10.44	2	4.0	8.0	12.1
Three Elms	15.06	3	3.9	6.9	5.9
Tupsley	10.21	1	4.9	11.4	9.8
Upton	14.19	3	5.3	5.3	0.0
Valletts	18.95	4	4.0	4.0	4.1
Wormsley Ridge	14.21	3	10.8	10.8	10.9
<b>North Staffordshire PCT</b>	<b>20.64</b>	<b>4</b>	<b>4.6</b>	<b>7.8</b>	<b>5.0</b>
Audley and Bignall End	18.84	4	0.0	2.0	2.0
Biddulph East	29.34	5	6.0	9.0	7.6
Biddulph Moor	8.87	1	0.0	8.2	8.2
Biddulph North	8.24	1	5.8	8.8	2.9
Biddulph South	16.64	3	0.0	0.0	0.0
Biddulph West	18.05	4	4.7	11.6	7.0
Bradwell	25.76	4	5.0	8.3	3.4
Butt Lane	27.17	4	1.9	3.9	3.9
Cellarhead	10.60	2	3.8	3.8	0.0
Cheadle North East	21.01	4	5.6	11.3	8.5
Cheadle South East	18.01	4	2.9	8.8	8.9
Cheadle West	18.43	4	0.0	4.8	4.8
Checkley	10.86	2	4.6	6.9	4.6
Cheddleton	14.54	3	0.0	2.5	2.5
Chesterton	26.34	4	9.1	18.1	12.2
Churnet	19.28	4	7.3	11.0	3.7
Clayton	17.80	3	3.8	3.8	0.0
Cross Heath	39.03	5	4.4	4.4	5.8
Dane	17.25	3	15.3	15.3	7.8
Forsbrook	15.18	3	3.2	3.2	3.2
Halmerend	16.36	3	3.9	3.9	7.8
Hamps Valley	13.77	3	6.9	13.8	6.9
Holditch	34.67	5	6.1	8.1	6.1
Ipstones	14.70	3	0.0	0.0	0.0
Keele	4.95	1	0.0	0.0	0.0
Kidsgrove	22.41	4	0.0	5.4	12.1
Knutton and Silverdale	37.01	5	10.4	12.5	4.2
Leek East	19.90	4	4.5	9.0	4.5
Leek North	28.20	4	5.7	11.5	5.8
Leek South	20.56	4	4.3	6.4	2.1
Leek West	12.19	2	5.0	7.4	2.5
Loggerheads and Whitmore	10.79	2	6.4	6.4	0.0
Madeley	9.97	1	2.7	2.7	0.0
Manifold	17.32	3	0.0	7.2	7.2
May Bank	13.82	3	7.3	7.3	0.0
Newchapel	17.16	3	12.5	15.7	3.2
Porthill	15.87	3	2.4	7.3	9.8
Ravenscliffe	16.87	3	2.7	5.4	5.4
Seabridge	12.41	2	4.2	6.3	2.1
Silverdale and Parksite	27.98	4	10.8	16.2	5.4
Talke	22.71	4	3.3	3.3	3.4

PCT and Ward	IMD Score	IMD Quintile	SBR	PMR	IMR
Thistleberry	24.67	4	2.5	7.4	7.4
Town	28.98	5	5.2	10.3	5.2
Werrington	9.65	1	4.5	9.1	4.6
Westlands	9.01	1	5.1	5.1	0.0
Wolstanton	19.01	4	1.7	3.4	3.4
<b>Sandwell PCT</b>	<b>37.77</b>	<b>5</b>	<b>6.7</b>	<b>11.0</b>	<b>7.5</b>
Abbey	24.02	4	4.7	5.5	4.0
Blackheath	32.11	5	7.0	10.8	7.8
Bristnall	35.00	5	9.2	11.6	5.0
Charlemont with Grove Vale	29.58	5	7.0	8.8	4.4
Cradley Heath and Old Hill	34.52	5	10.7	14.3	10.1
Friar Park	47.11	5	7.4	9.0	5.0
Great Barr with Yew Tree	24.18	4	4.6	7.7	6.2
Great Bridge	34.07	5	6.4	9.2	7.9
Greets Green and Lyng	46.77	5	4.9	9.1	6.7
Hateley Heath	42.61	5	5.6	9.8	5.6
Langley	34.58	5	2.8	10.6	9.2
Newton	24.19	4	1.7	7.6	8.4
Old Warley	26.83	4	5.8	11.7	7.8
Oldbury	34.91	5	8.1	12.1	8.2
Princes End	47.25	5	4.6	11.3	10.8
Rowley	32.81	5	3.1	10.8	9.3
Smethwick	40.43	5	6.6	10.9	7.9
Soho and Victoria	55.27	5	6.3	11.8	11.4
St Pauls	45.52	5	8.4	15.0	10.2
Tipton Green	34.03	5	12.4	16.8	5.7
Tividale	33.71	5	8.8	10.1	2.0
Wednesbury North	36.00	5	3.2	8.9	7.3
Wednesbury South	37.95	5	7.0	8.6	3.9
West Bromwich Central	44.77	5	11.3	16.3	8.2
<b>Shropshire County PCT</b>	<b>16.23</b>	<b>3</b>	<b>4.4</b>	<b>6.7</b>	<b>4.6</b>
Albrighton South	13.80	3	3.8	7.5	7.5
Alveley	13.00	2	0.0	0.0	4.5
Apedale	16.32	3	0.0	0.0	0.0
Bagley	18.03	4	1.6	4.7	4.7
Baschurch	10.76	2	0.0	0.0	0.0
Battlefield and Heathgates	19.09	4	3.3	4.9	1.6
Bayston Hill	7.39	1	5.5	8.2	8.3
Belle Vue	14.72	3	10.1	15.2	10.2
Bishop's Castle with Onny Valley	16.69	3	0.0	0.0	0.0
Bitterley with Stoke St Milborough	19.42	4	0.0	9.8	9.8
Bowbrook	13.31	2	3.1	4.6	4.7
Bridgnorth Castle	8.14	1	0.0	0.0	0.0
Bridgnorth East	10.00	1	7.4	7.4	7.5
Bridgnorth Morfe	14.51	3	4.1	8.3	4.1
Bridgnorth West	12.24	2	0.0	0.0	0.0
Broseley East	11.81	2	13.2	17.5	4.4
Broseley West	15.87	3	0.0	4.8	4.8
Bucknell	14.12	3	0.0	0.0	0.0
Burford	11.76	2	0.0	0.0	0.0
Cabin Lane	8.74	1	0.0	0.0	3.0
Carreg Llwyd	22.68	4	9.1	9.1	12.2
Castle	22.34	4	4.6	9.2	4.6
Castlefields and Quarry	24.71	4	12.9	12.9	0.0
Caynham with Ashford	10.09	1	11.5	11.5	11.6
Chirbury	16.82	3	0.0	0.0	0.0
Church Stretton North	8.63	1	0.0	10.6	10.6
Church Stretton South	7.38	1	0.0	0.0	0.0
Claverley	8.90	1	0.0	8.7	8.7
Clee	17.04	3	5.1	5.1	0.0
Cleobury Mortimer	9.56	1	0.0	7.7	7.7
Clive and Myddle	13.24	2	4.7	14.1	18.9
Clun	17.41	3	0.0	0.0	0.0
Clun Forest	17.41	3	0.0	0.0	0.0
Cockshutt	13.13	2	0.0	0.0	0.0
Column	12.37	2	8.2	8.2	12.4
Condover	11.32	2	0.0	0.0	11.3
Copthorne	6.53	1	8.4	11.1	2.8
Corve Valley	18.13	4	0.0	0.0	0.0
Ditton Priors	15.77	3	0.0	7.3	7.3
Donington and Albrighton North	5.40	1	14.3	14.3	2.9
Dudleston Heath	19.16	4	8.3	8.3	0.0
Ellesmere and Welshampton	14.87	3	0.0	3.0	3.0
Gatacre	25.97	4	6.3	6.3	3.2
Glazeley	13.70	2	0.0	0.0	7.1
Gobowen	23.67	4	6.9	10.3	6.9
Hanwood and Longden	14.19	3	6.1	6.1	0.0
Harlescott	26.64	4	1.4	4.3	4.3
Harrington	16.63	3	19.2	19.2	9.8
Haughmond and Attingham	18.70	4	14.1	14.1	4.8
Highley	17.62	3	6.1	6.1	6.1
Hinstock	15.43	3	0.0	4.0	4.0

PCT and Ward	IMD Score	IMD Quintile	SBR	PMR	IMR
Hodnet	19.10	4	7.8	7.8	0.0
Hordley;Tetchill and Lyneal	16.16	3	0.0	0.0	0.0
Kemp Valley	17.71	3	0.0	0.0	0.0
Kinnerley	16.02	3	10.1	10.1	10.2
Lawley	15.27	3	10.1	10.1	0.0
Llanyblodwel and Pant	15.42	3	20.7	20.7	0.0
Ludlow Henley	29.69	5	11.1	22.1	11.2
Ludlow Sheet with Ludford	13.08	2	2.9	2.9	2.9
Ludlow St Laurence's	20.20	4	0.0	0.0	0.0
Ludlow St Peter's	16.17	3	3.9	3.9	3.9
Market Drayton East	24.27	4	8.3	11.0	8.3
Market Drayton North	13.26	2	0.0	2.2	6.5
Market Drayton South	19.92	4	3.6	18.1	14.5
Maserfield	9.82	1	0.0	12.8	12.8
Meole Brace	19.54	4	6.6	13.1	8.8
Monkmoor	22.37	4	5.1	5.1	1.7
Montford	13.50	2	0.0	0.0	5.1
Morville	13.41	2	7.5	7.5	0.0
Much Wenlock	12.43	2	8.3	8.3	0.0
Pimhill	13.47	2	0.0	0.0	0.0
Porthill	11.71	2	2.8	5.6	2.8
Prees	17.70	3	4.4	4.4	4.4
Rea Valley	13.04	2	4.8	4.8	2.4
Rowton	16.70	3	0.0	0.0	0.0
Ruyton and West Felton	13.00	2	3.7	3.7	0.0
Severn Valley	17.03	3	0.0	0.0	16.3
Shavington	19.84	4	0.0	11.2	22.5
Shawbury	9.06	1	3.4	3.4	0.0
Shifnal Idsall	13.11	2	4.4	13.2	8.8
Shifnal Manor	6.09	1	0.0	0.0	0.0
Shifnal Rural	11.77	2	0.0	0.0	0.0
St. Martin's	16.95	3	8.7	17.5	8.8
Stokesay	16.96	3	0.0	0.0	0.0
Stottesdon	17.72	3	0.0	0.0	0.0
Sundorne	21.27	4	1.8	5.3	5.3
Sutton	15.79	3	0.0	2.9	5.8
Sutton and Reabrook	11.93	2	5.9	5.9	6.0
Sweeney and Trefonen	14.82	3	0.0	3.6	3.6
Underdale	19.76	4	14.6	16.4	1.9
Upper Corvedale	17.46	3	0.0	11.1	22.2
Wem East	15.46	3	4.6	9.3	9.3
Wem Rural	19.76	4	0.0	0.0	0.0
Wem West	14.86	3	11.6	11.6	0.0
Weston Rhyn	16.08	3	0.0	13.2	17.5
Whitchurch North	24.15	4	13.6	17.0	6.9
Whitchurch Rural	17.91	3	0.0	0.0	0.0
Whitchurch South	20.75	4	3.4	6.7	3.4
Whitchurch West	20.47	4	0.0	0.0	0.0
Whittington	18.08	4	0.0	0.0	4.1
Whixhall	18.37	4	0.0	0.0	0.0
Wistanstow with Hopesay	16.14	3	0.0	0.0	0.0
Woore	10.31	2	0.0	0.0	0.0
Worfield	15.25	3	0.0	0.0	0.0
Worthen	16.82	3	6.1	12.2	6.1
<b>Solihull PCT</b>	<b>20.15</b>	<b>4</b>	<b>5.7</b>	<b>8.8</b>	<b>4.5</b>
Bickenhill	21.44	4	6.8	9.3	3.4
Blythe	6.56	1	7.0	10.4	3.5
Castle Bromwich	16.83	3	5.8	7.3	1.5
Chelmsley Wood	43.41	5	5.1	9.6	6.3
Dorridge and Hockley Heath	4.00	1	7.6	11.5	3.8
Elmdon	13.29	2	5.7	7.6	1.9
Kingshurst and Fordbridge	44.07	5	5.1	8.5	6.9
Knowle	5.70	1	1.5	3.0	4.5
Lyndon	16.14	3	4.1	7.4	5.8
Meriden	7.84	1	8.7	13.0	4.4
Olton	11.07	2	5.2	9.3	5.2
Shirley East	9.83	1	9.2	11.2	5.1
Shirley South	10.53	2	7.3	11.0	3.7
Shirley West	12.13	2	3.6	7.2	5.4
Silhill	8.99	1	1.3	3.8	2.5
Smith's Wood	42.80	5	7.1	8.3	3.0
St Alphege	4.73	1	5.1	9.3	5.2
<b>South Birmingham PCT</b>	<b>33.62</b>	<b>5</b>	<b>6.1</b>	<b>10.7</b>	<b>7.0</b>
Bartley Green	40.26	5	7.5	12.1	6.9
Billesley	38.58	5	6.4	10.6	5.4
Bournville	27.31	4	3.7	10.7	8.6
Brandwood	36.31	5	3.0	7.2	6.5
Edgbaston	26.77	4	7.3	10.3	7.3
Hall Green	20.79	4	6.3	9.3	5.6
Harborne	26.19	4	9.9	15.6	7.2
Kings Norton	41.04	5	7.7	11.4	6.8
Longbridge	37.58	5	2.9	9.5	8.9



PCT and Ward	IMD Score	IMD Quintile	SBR	PMR	IMR
Moseley and Kings Heath	34.91	5	8.6	15.5	9.7
Northfield	30.78	5	5.6	9.3	6.0
Quinton	34.45	5	6.0	9.4	6.1
Selly Oak	22.89	4	5.1	9.0	5.8
Weoley	41.07	5	6.4	9.8	7.2
<b>South Staffordshire PCT</b>	<b>17.49</b>	<b>3</b>	<b>5.4</b>	<b>9.0</b>	<b>5.9</b>
Abbey	10.52	2	0.0	0.0	0.0
All Saints	8.09	1	10.1	10.1	0.0
Alrewas and Fradley	9.09	1	8.3	14.5	10.4
Amington	21.20	4	3.0	4.9	2.0
Anglesey	33.75	5	3.8	7.7	7.7
Armitage with Handsacre	14.10	3	1.7	3.5	5.2
Bagots	9.24	1	0.0	11.2	22.3
Barlaston and Oulton	17.26	3	4.4	8.8	4.4
Baswich	4.00	1	7.5	7.5	0.0
Belgrave	28.91	5	6.6	8.8	7.7
Bilbrook	14.63	3	5.8	8.8	2.9
Bolehall	20.38	4	8.3	12.4	8.3
Boley Park	4.14	1	2.4	4.8	2.4
Boney Hay	19.92	4	0.0	9.9	9.9
Bourne Vale	13.94	3	0.0	0.0	19.2
Branston	8.97	1	4.8	7.2	4.8
Brereton and Ravenhill	24.02	4	8.7	10.1	2.9
Brewood and Coven	10.32	2	4.7	4.7	2.4
Brizlincote	8.15	1	7.8	9.7	2.0
Burntwood Central	9.91	1	0.0	0.0	0.0
Burton	36.61	5	8.9	8.9	0.0
Cannock East	29.45	5	3.9	9.1	6.5
Cannock North	34.43	5	0.0	6.1	8.5
Cannock South	30.05	5	5.1	8.9	3.8
Cannock West	16.00	3	4.1	10.2	10.2
Castle	17.68	3	3.3	5.5	6.7
Chadsmead	22.06	4	11.2	13.4	4.5
Chartley	7.79	1	0.0	0.0	0.0
Chase Terrace	9.41	1	2.0	7.9	6.0
Chasetown	24.87	4	3.0	9.1	9.2
Cheslyn Hay North and Saredon	13.85	3	8.6	14.4	11.6
Cheslyn Hay South	8.64	1	7.4	12.3	5.0
Church Eaton	7.65	1	12.9	19.4	6.5
Churnet	14.40	3	0.0	0.0	3.9
Codsall North	9.76	1	10.3	13.7	3.5
Codsall South	6.25	1	0.0	0.0	0.0
Colton and Mavesyn Ridware	13.22	2	0.0	0.0	8.1
Common	15.44	3	4.0	8.1	4.1
Coton	16.67	3	3.3	8.2	8.2
Crown	11.92	2	5.1	5.1	5.2
Curborough	17.36	3	2.0	11.9	15.9
Eccleshall	10.74	2	4.5	11.2	9.0
Essington	15.75	3	2.6	7.7	10.2
Etching Hill and The Heath	20.25	4	5.8	11.7	8.8
Eton Park	32.19	5	10.4	15.1	11.7
Fazeley	20.08	4	2.4	4.8	4.8
Featherstone and Shareshill	19.70	4	5.3	7.1	1.8
Forebridge	18.10	4	12.6	20.1	7.6
Fulford	13.06	2	3.2	6.4	3.2
Glascote	34.90	5	12.0	15.4	6.1
Gnosall and Woodseaves	10.53	2	7.5	15.1	11.4
Great Wyrley Landywood	15.51	3	4.5	15.7	24.7
Great Wyrley Town	15.08	3	0.0	4.7	9.5
Hagley	26.45	4	8.9	13.4	4.5
Hammerwich	10.71	2	5.0	14.9	10.0
Hawks Green	6.52	1	5.5	11.0	6.6
Haywood and Hixon	8.63	1	6.1	10.1	4.1
Heath	17.62	3	3.4	8.4	5.1
Heath Hayes East and Wimblebury	15.41	3	1.5	1.5	0.0
Hednesford Green Heath	12.27	2	6.2	6.2	4.2
Hednesford North	25.67	4	8.3	13.1	4.8
Hednesford South	12.20	2	2.0	2.0	4.1
Highfield	6.96	1	3.4	6.8	3.4
Highfields and Western Downs	26.06	4	2.4	6.1	6.1
Himley and Swindon	14.23	3	0.0	0.0	0.0
Holmcroft	20.89	4	4.7	7.9	7.9
Horninglow	24.85	4	5.2	6.5	2.6
Huntington and Hatherton	24.12	4	8.9	16.0	9.0
King's Bromley	8.67	1	8.8	17.5	8.8
Kinver	11.21	2	9.7	9.7	0.0
Leomansley	11.70	2	2.4	4.9	12.2
Little Aston	5.20	1	6.0	6.0	0.0
Littleworth	12.35	2	5.5	9.1	3.7
Longdon	8.31	1	20.8	20.8	0.0
Manor	22.34	4	1.8	7.2	12.6
Mease and Tame	11.11	2	10.3	13.7	6.9
Mercian	18.56	4	1.7	1.7	1.7

PCT and Ward	IMD Score	IMD Quintile	SBR	PMR	IMR
Milford	7.11	1	7.8	7.8	3.9
Milwich	14.04	3	0.0	0.0	0.0
Needwood	9.24	1	2.6	13.1	10.5
Norton Canes	28.30	4	7.1	7.1	1.4
Pattingham and Patshull	7.11	1	0.0	0.0	0.0
Penkridge North East and Acton Trussell	10.81	2	10.1	10.1	0.0
Penkridge South East	8.43	1	2.3	4.6	4.7
Penkridge West	11.76	2	11.8	17.6	6.0
Penkside	25.85	4	0.0	2.2	4.5
Perton Dippons	7.22	1	6.0	6.0	0.0
Perton East	2.92	1	5.2	5.2	0.0
Perton Lakeside	8.54	1	7.4	10.3	4.5
Rawnsley	16.11	3	8.0	8.0	0.0
Rolleston on Dove	9.05	1	4.1	8.2	4.1
Rowley	10.05	1	9.6	9.6	0.0
Seighford	9.36	1	0.0	0.0	0.0
Shenstone	10.26	1	11.7	11.7	7.9
Shobnall	35.23	5	5.8	14.0	9.4
Spital	17.39	3	9.8	13.7	5.9
St John's	7.22	1	5.9	8.8	14.8
St. Michael's	7.86	1	8.2	13.1	6.6
Stapenhill	31.11	5	6.6	8.0	4.0
Stonefield and Christchurch	12.58	2	11.2	15.7	4.5
Stonnall	9.86	1	0.0	16.1	16.1
Stonydelph	23.64	4	5.1	9.3	6.8
Stowe	14.91	3	7.9	10.6	5.3
Stretton	7.82	1	1.4	8.4	8.4
Summerfield	16.25	3	0.0	6.0	8.0
Swynnerton	10.60	2	7.0	10.6	3.5
Tillington	19.67	4	4.4	8.8	8.8
Town	12.03	2	2.8	4.2	4.2
Trinity	8.51	1	8.8	10.3	1.5
Trysull and Seisdon	10.76	2	0.0	0.0	0.0
Tutbury and Outwoods	10.98	2	6.3	10.6	4.3
Walton	11.55	2	6.9	9.2	6.9
Weaver	12.52	2	5.7	5.7	0.0
Weeping Cross	3.24	1	4.3	8.7	6.5
Western Springs	16.77	3	3.2	8.0	8.1
Wheaton Aston; Bishopswood and Lapley	10.37	2	3.6	7.1	3.6
Whittington	5.99	1	2.7	2.7	0.0
Wilnecote	16.10	3	5.5	11.0	9.9
Winshill	28.57	5	2.4	4.8	2.4
Wombourne North and Lower Penn	7.98	1	11.6	11.6	2.3
Wombourne South East	6.42	1	4.4	8.8	4.4
Wombourne South West	17.24	3	13.9	17.9	6.0
Yoxall	8.84	1	11.9	11.9	0.0
<b>Stoke on Trent Teaching PCT</b>	<b>38.46</b>	<b>5</b>	<b>6.6</b>	<b>11.6</b>	<b>8.7</b>
Abbey Green	42.36	5	2.6	5.2	6.1
Bagnall and Stanley	11.85	2	0.0	0.0	0.0
Bentilee and Townsend	56.76	5	10.1	15.5	9.5
Berryhill and Hanley East	37.30	5	4.3	8.5	7.5
Blurton	46.69	5	6.0	13.4	12.0
Brown Edge and Endon	12.82	2	0.0	6.3	9.4
Burslem North	39.28	5	10.9	18.9	8.8
Burslem South	51.12	5	9.9	13.6	10.5
Caverswall	17.80	3	0.0	0.0	0.0
Chell and Packmoor	38.73	5	9.2	16.9	10.7
East Valley	32.84	5	11.3	21.7	13.4
Fenton	39.55	5	5.4	7.5	4.1
Hanley West and Shelton	44.61	5	6.3	10.2	9.4
Hartshill and Penkhull	21.73	4	3.4	7.7	6.0
Longton North	32.03	5	4.5	12.7	12.1
Longton South	35.05	5	4.2	10.3	9.1
Meir Park and Sandon	38.13	5	2.7	4.7	6.1
Northwood and Birches Head	32.14	5	1.6	5.5	6.3
Norton and Bradeley	37.98	5	7.9	11.9	9.0
Stoke and Trent Vale	34.03	5	5.9	10.4	9.0
Trentham and Hanford	14.93	3	3.3	3.3	1.1
Tunstall	43.00	5	13.1	17.8	10.1
Weston and Meir North	42.15	5	6.6	12.3	10.7
<b>Telford and Wrekin PCT</b>	<b>24.97</b>	<b>4</b>	<b>6.8</b>	<b>10.1</b>	<b>6.4</b>
Apley Castle	5.93	1	15.3	19.1	3.9
Arleston	28.35	5	2.7	5.4	5.4
Brookside	33.03	5	11.4	15.3	8.7
Church Aston and Lilleshall	10.60	2	8.8	8.8	0.0
College	37.92	5	7.4	9.9	2.5
Cuckoo Oak	35.83	5	8.9	12.7	11.6
Dawley Magna	24.00	4	7.8	9.6	2.6
Donnington	37.05	5	3.0	6.0	4.5
Dothill	14.06	3	3.5	3.5	3.5
Edgmond	7.25	1	6.3	12.6	19.0
Erccall	15.29	3	18.5	18.5	9.4

PCT and Ward	IMD Score	IMD Quintile	SBR	PMR	IMR
Ercall Magna	15.58	3	5.7	5.7	0.0
Hadley and Leegomery	28.27	4	7.6	11.4	7.7
Haygate	30.00	5	9.7	16.1	13.0
Horsehay and Lightmoor	10.58	2	8.4	8.4	2.8
Ironbridge Gorge	15.30	3	10.2	20.3	10.3
Ketley and Oakengates	24.00	4	6.2	6.2	1.0
Lawley and Overdale	21.24	4	1.3	6.4	6.5
Madeley	26.12	4	11.3	13.5	4.6
Malinslee	41.52	5	9.8	19.6	17.6
Muxton	20.11	4	3.6	10.9	8.5
Newport East	15.96	3	8.8	8.8	0.0
Newport North	10.03	1	0.0	0.0	0.0
Newport South	11.76	2	0.0	5.4	16.3
Newport West	11.01	2	5.3	5.3	0.0
Park	14.39	3	0.0	13.3	20.0
Priorslee	7.52	1	7.8	11.0	3.2
Shawbirch	8.84	1	0.0	2.7	8.1
St Georges	22.61	4	6.7	10.0	6.7
The Nedge	24.55	4	5.4	7.2	6.4
Woodside	43.43	5	5.1	8.4	5.9
Wrockwardine	11.24	2	8.3	8.3	0.0
Wrockwardine Wood and Trench	20.10	4	6.3	7.9	3.2
<b>Walsall Teaching PCT</b>	<b>34.27</b>	<b>5</b>	<b>5.0</b>	<b>9.1</b>	<b>7.7</b>
Aldridge Central and South	18.01	4	5.7	9.6	5.8
Aldridge North and Walsall Wood	19.26	4	4.7	7.0	4.7
Bentley and Darlaston North	36.87	5	2.3	8.0	11.5
Birchills Leamore	46.21	5	3.7	10.5	9.2
Blakenall	54.86	5	3.9	9.5	10.8
Bloxwich East	42.18	5	8.5	12.0	7.9
Bloxwich West	33.07	5	2.9	7.9	5.8
Brownhills	25.71	4	6.8	7.5	2.8
Darlaston South	38.82	5	3.5	8.9	8.3
Paddock	17.84	3	2.8	8.4	15.0
Palfrey	39.86	5	6.2	10.1	8.6
Pelsall	17.68	3	2.1	4.1	4.1
Pheasey Park Farm	14.31	3	0.0	2.4	4.8
Pleck	45.79	5	9.1	13.8	8.3
Rushall-Shelfield	24.70	4	5.4	6.3	4.5
Short Heath	25.45	4	4.0	5.0	3.0
St Matthew's	41.46	5	4.7	11.6	11.1
Streetly	7.25	1	6.1	6.1	1.2
Willenhall North	25.28	4	5.0	6.5	4.3
Willenhall South	35.51	5	7.5	12.8	9.2
<b>Warwickshire PCT</b>	<b>15.81</b>	<b>3</b>	<b>4.4</b>	<b>7.1</b>	<b>4.8</b>
Abbey (44UCFR)	31.93	5	14.8	21.7	8.0
Abbey (44UFFX)	6.41	1	6.1	10.7	4.6
Admirals	9.10	1	3.1	4.7	3.1
Alcester	11.63	2	5.3	8.8	8.9
Arbury	18.20	4	1.8	1.8	5.3
Arley and Whitacre	21.91	4	6.5	8.1	1.6
Aston Cantlow	10.54	2	0.0	5.3	10.5
Atherstone Central	29.81	5	2.1	2.1	2.1
Atherstone North	15.90	3	6.5	6.5	3.2
Atherstone South and Mancetter	23.37	4	0.0	6.5	6.5
Attleborough	16.35	3	9.7	15.1	12.0
Avon and Swift	17.96	3	4.1	16.5	12.4
Baddesley and Grendon	16.34	3	8.6	8.6	0.0
Bar Pool	29.98	5	5.3	5.3	3.2
Bardon	10.38	2	0.0	0.0	0.0
Bede	30.74	5	5.3	10.5	8.8
Benn	21.48	4	1.1	3.4	5.7
Bidford and Salford	10.24	1	1.6	4.7	4.7
Bilton	5.56	1	0.0	0.0	6.6
Bishop's Tachbrook	7.91	1	0.0	0.0	0.0
Brailes	8.67	1	12.7	12.7	0.0
Brownsover North	6.96	1	4.9	6.6	1.7
Brownsover South	24.74	4	3.1	4.7	4.7
Brunswick	24.77	4	2.1	4.2	4.3
Budbrooke	10.34	2	0.0	0.0	3.6
Bulkington	13.53	2	0.0	0.0	2.4
Burton Dassett	12.11	2	4.0	4.0	0.0
Caldecott	11.47	2	4.6	6.9	2.3
Camp Hill	37.26	5	4.6	10.2	9.3
Clarendon	15.48	3	13.7	13.7	4.0
Claverdon	6.98	1	14.9	14.9	0.0
Coleshill North	10.56	2	6.0	6.0	0.0
Coleshill South	15.79	3	0.0	8.7	8.7
Crown	23.91	4	1.5	3.1	4.6
Cubbington	7.17	1	0.0	2.1	4.2
Curdworth	13.04	2	4.4	8.7	4.4
Dordon	19.79	4	5.6	8.5	5.7
Dunchurch and Knightlow	9.04	1	2.6	7.9	7.9

PCT and Ward	IMD Score	IMD Quintile	SBR	PMR	IMR
Earl Craven and Wolston	11.07	2	8.9	13.4	4.5
Eastlands	6.51	1	2.0	8.2	6.1
Ettington	8.80	1	9.7	9.7	0.0
Exhall	24.87	4	2.7	4.0	4.0
Fenny Compton	9.21	1	0.0	0.0	0.0
Fillongley	17.05	3	0.0	0.0	0.0
Fosse	12.34	2	3.5	3.5	0.0
Galley Common	16.17	3	4.9	5.9	3.0
Harbury	6.12	1	2.1	8.3	6.2
Hartshill	17.37	3	5.0	5.0	0.0
Heath	25.94	4	9.6	12.3	4.1
Henley	8.12	1	0.0	0.0	0.0
Hillmorton	13.04	2	6.8	11.3	6.8
Hurley and Wood End	16.75	3	5.2	5.2	0.0
Kineton	10.79	2	4.3	8.6	8.6
Kingsbury	11.55	2	5.5	13.8	11.1
Kingswood	30.41	5	5.0	10.0	7.6
Kinwarton	6.77	1	12.1	12.1	6.1
Lapworth	14.13	3	11.6	15.5	3.9
Lawford and King's Newnham	13.31	2	5.2	5.2	2.6
Leam Valley	10.24	1	0.0	0.0	0.0
Leek Wootton	12.73	2	0.0	0.0	0.0
Long Compton	13.76	2	17.6	17.6	0.0
Long Itchington	8.11	1	0.0	0.0	5.1
Manor	10.54	2	3.1	7.9	6.3
Milverton	14.30	3	5.3	6.6	4.0
New Bilton	21.12	4	1.4	2.9	2.9
Newbold	25.24	4	4.0	4.0	2.7
Newton Regis and Warton	13.85	3	0.0	6.3	12.6
Overslade	22.21	4	11.3	20.6	15.2
Paddox	7.01	1	3.1	3.1	3.1
Park Hill	5.76	1	0.0	0.0	0.0
Polesworth East	16.18	3	0.0	9.1	9.1
Polesworth West	11.20	2	2.9	5.9	5.9
Poplar	23.83	4	5.6	7.9	2.3
Quinton	11.02	2	3.8	7.5	3.8
Radford Semele	8.16	1	4.7	4.7	9.4
Ryton-on-Dunsmore	9.97	1	5.3	10.5	10.6
Sambourne	11.35	2	6.0	6.0	6.0
Shipston	6.57	1	5.1	5.1	0.0
Slough	16.50	3	2.7	5.3	4.0
Snitterfield	7.86	1	5.2	5.2	10.4
Southam	7.12	1	0.0	1.4	2.8
St John's	7.31	1	1.8	7.2	5.4
St Nicolas	7.79	1	4.2	4.2	0.0
Stockton and Napton	6.60	1	7.2	7.2	0.0
Stoneleigh	12.12	2	0.0	0.0	0.0
Stratford Alveston	5.27	1	0.0	0.0	2.5
Stratford Avenue and New Town	12.51	2	2.1	4.2	6.3
Stratford Guild and Hathaway	6.59	1	2.2	10.9	11.0
Stratford Mount Pleasant	9.73	1	2.4	7.2	4.8
Studley	9.33	1	3.9	5.9	3.9
Tanworth	10.28	2	4.0	4.0	4.0
Tredington	8.45	1	5.3	5.3	5.3
Vale of the Red Horse	7.54	1	0.0	5.9	11.8
Warwick North	13.93	3	4.8	6.0	7.2
Warwick South	9.68	1	5.5	7.7	2.2
Warwick West	18.23	4	5.9	9.8	4.9
Water Orton	11.69	2	6.9	13.8	7.0
Weddington	10.47	2	8.8	8.8	0.0
Welford	8.99	1	7.3	14.6	7.4
Wellesbourne	7.68	1	1.8	7.2	7.2
Wem Brook	35.28	5	3.9	6.5	5.2
Whitestone	4.90	1	5.7	7.5	3.8
Whitnash	10.47	2	4.5	7.9	4.6
Willes	16.58	3	5.1	9.3	6.2
Wolvey	9.43	1	0.0	6.4	6.4
<b>Wolverhampton PCT</b>	<b>36.56</b>	<b>5</b>	<b>5.4</b>	<b>10.2</b>	<b>7.7</b>
Bilston East	48.40	5	8.5	12.4	6.6
Bilston North	36.39	5	4.9	7.3	4.9
Blakenhall	39.78	5	5.2	8.1	5.2
Bushbury North	30.65	5	7.0	11.5	8.0
Bushbury South and Low Hill	53.37	5	5.2	12.1	11.3
East Park	46.47	5	6.5	11.7	8.5
Ettingshall	46.38	5	5.3	11.1	10.1
Fallings Park	38.76	5	7.3	16.0	13.2
Graiseley	37.68	5	8.8	12.9	7.5
Heath Town	46.42	5	5.1	10.9	8.4
Merry Hill	18.47	4	2.6	7.0	5.3
Oxley	31.81	5	1.2	3.7	3.7
Park	33.91	5	5.4	8.2	6.4
Penn	12.66	2	2.6	6.1	5.2
Spring Vale	33.73	5	4.2	10.0	7.5

PCT and Ward	IMD Score	IMD Quintile	SBR	PMR	IMR
St Peter's	42.55	5	5.3	14.1	13.6
Tettenhall Regis	12.84	2	5.7	7.6	1.9
Tettenhall Wightwick	14.03	3	7.5	9.0	1.5
Wednesfield North	29.30	5	6.8	9.7	3.9
Wednesfield South	31.23	5	3.8	9.8	11.4
<b>Worcestershire PCT</b>	<b>16.90</b>	<b>3</b>	<b>5.5</b>	<b>9.1</b>	<b>5.3</b>
Abbey	29.07	5	4.6	9.3	10.9
Aggborough and Spennells	14.66	3	6.7	6.7	0.0
Alfrick and Leigh	12.76	2	8.7	8.7	0.0
Alvechurch	10.88	2	9.7	11.6	1.9
Arboretum	18.08	4	6.0	10.5	4.5
Areley Kings	25.00	4	11.6	17.4	9.8
Astwood Bank and Feckenham	9.17	1	2.1	6.2	6.2
Badsey	11.29	2	0.0	0.0	0.0
Baldwin	15.41	3	16.9	16.9	0.0
Batchley	23.19	4	4.9	9.9	6.0
Battenhall	12.09	2	6.7	8.9	4.5
Beacon	11.00	2	0.0	0.0	0.0
Bedwardine	10.14	1	2.9	8.8	8.8
Bengeworth	16.61	3	5.8	5.8	3.9
Bewdley and Arley	11.93	2	4.4	6.6	4.4
Blakedown and Chaddesley	12.41	2	0.0	0.0	0.0
Bowbrook	8.03	1	9.8	19.5	9.9
Bredon	5.13	1	6.0	6.0	6.0
Bretforton and Offenham	7.72	1	10.0	10.0	0.0
Broadheath	7.67	1	3.7	3.7	3.7
Broadwaters	33.19	5	5.9	5.9	2.0
Broadway and Wickhamford	10.94	2	3.8	3.8	0.0
Cathedral	26.03	4	5.8	11.6	8.7
Catshill	13.64	2	10.3	15.5	10.4
Central	27.09	4	9.6	13.7	5.5
Charford	22.00	4	15.9	19.8	5.4
Chase	14.98	3	0.0	2.3	9.3
Church Hill	25.47	4	3.8	8.6	4.8
Claines	10.79	2	2.8	4.2	5.6
Cookley	17.57	3	4.3	8.5	4.3
Crabbs Cross	7.44	1	5.0	13.4	8.4
Dodderhill	13.51	2	4.9	4.9	0.0
Drakes Broughton	10.97	2	5.2	5.2	0.0
Drakes Cross and Walkers Heath	12.24	2	9.1	11.3	2.3
Droitwich Central	18.05	4	8.4	8.4	4.2
Droitwich East	12.45	2	0.0	4.5	6.8
Droitwich South East	3.21	1	7.3	11.0	7.4
Droitwich South West	10.09	1	11.4	15.9	4.6
Droitwich West	24.10	4	7.4	10.3	5.9
Dyson Perrins	13.11	2	8.2	12.3	4.1
Eckington	12.43	2	0.0	0.0	0.0
Elmley Castle and Somerville	8.90	1	0.0	5.2	5.2
Evesham North	18.99	4	5.4	10.8	7.2
Evesham South	14.52	3	5.5	9.1	7.3
Fladbury	9.88	1	0.0	0.0	0.0
Franche	13.53	2	3.5	8.8	5.3
Furlongs	7.33	1	3.7	7.4	3.7
Gorse Hill	35.79	5	2.8	9.9	12.8
Great Hampton	14.22	3	23.1	40.5	17.8
Greenhill	24.46	4	8.9	19.1	11.6
Greenlands	29.39	5	3.9	9.8	8.9
Habberley and Blakebrook	19.59	4	5.8	15.4	9.7
Hagley	3.63	1	0.0	11.4	11.4
Hallow	10.92	2	0.0	0.0	0.0
Hartlebury	12.59	2	8.6	12.9	8.7
Harvington and Norton	15.39	3	9.1	18.3	13.8
Headless Cross and Oakenshaw	15.09	3	2.5	6.3	8.8
Hillside	5.07	1	0.0	8.6	8.6
Hollywood and Majors Green	7.14	1	3.5	6.9	3.5
Honeybourne and Pebworth	12.67	2	4.0	7.9	4.0
Inkberrow	8.35	1	2.8	8.5	5.7
Kempsey	11.04	2	0.0	3.7	3.7
Lickhill	14.22	3	0.0	0.0	0.0
Lindridge	14.67	3	6.6	6.6	0.0
Link	14.65	3	10.6	12.8	4.3
Linthurst	3.51	1	0.0	0.0	0.0
Little Hampton	8.01	1	4.0	4.0	0.0
Lodge Park	27.33	4	3.4	5.1	1.7
Longdon	13.51	2	13.8	13.8	7.0
Lovett and North Claines	9.36	1	2.3	9.2	9.2
Marlbrook	10.93	2	12.0	18.0	6.1
Martley	12.79	2	18.9	18.9	9.6
Matchborough	24.59	4	9.5	14.3	6.4
Mitton	16.11	3	3.0	4.5	1.5
Norton	6.70	1	5.0	5.0	0.0
Norton and Whittington	5.72	1	0.0	0.0	0.0
Nunnery	24.03	4	9.9	13.2	7.8

PCT and Ward	IMD Score	IMD Quintile	SBR	PMR	IMR
Offmore and Comberton	24.20	4	5.7	11.4	5.7
Oldington and Foley Park	40.83	5	4.4	5.9	3.0
Ombersley	10.68	2	0.0	6.0	6.0
Pershore	12.99	2	1.9	1.9	0.0
Pickersleigh	25.42	4	6.2	8.7	3.7
Pinvin	10.93	2	0.0	0.0	4.0
Powick	12.34	2	0.0	3.5	6.9
Priory	11.98	2	4.3	4.3	0.0
Rainbow Hill	31.85	5	6.1	7.4	2.5
Ripple	12.70	2	0.0	17.5	17.5
Rock	16.53	3	0.0	6.0	6.0
Sidemoor	16.65	3	4.4	8.8	8.9
Slideslow	3.74	1	4.0	8.1	4.0
South Bredon Hill	9.48	1	6.8	13.7	6.9
St Clement	8.28	1	5.3	8.0	2.7
St John	22.89	4	7.3	12.1	8.5
St Johns	13.88	3	2.9	5.8	8.8
St Peter's Parish	5.05	1	1.5	4.5	6.0
St Stephen	16.82	3	6.0	6.0	0.0
Stoke Heath	3.42	1	4.2	12.6	12.6
Stoke Prior	9.72	1	0.0	0.0	0.0
Sutton Park	21.47	4	8.2	13.7	5.5
Tardebigge	10.74	2	4.5	9.0	4.5
Teme Valley	14.30	3	6.8	13.5	6.8
Tenbury	13.75	2	3.5	7.0	3.5
The Littletons	12.70	2	3.9	3.9	0.0
Uffdown	12.93	2	13.1	45.8	33.1
Upton and Hanley	12.48	2	9.1	12.2	6.2
Upton Snodsbury	10.43	2	5.6	5.6	0.0
Warndon	41.06	5	4.8	8.3	7.2
Warndon Parish North	6.03	1	5.6	8.4	4.7
Warndon Parish South	5.49	1	3.3	6.5	4.4
Waseley	11.49	2	2.8	5.5	2.8
Wells	7.85	1	5.2	20.7	15.6
West	12.77	2	7.2	7.2	2.4
West	6.98	1	0.0	2.1	2.1
Whitford	11.84	2	16.8	18.6	3.8
Winyates	24.54	4	6.2	7.9	4.4
Wolverley	16.77	3	0.0	8.1	8.1
Woodbury	7.72	1	7.4	14.7	7.4
Woodvale	7.57	1	0.0	6.3	6.3
Wribbenhall	12.94	2	8.2	8.2	0.0
Wythall South	7.47	1	6.3	6.3	0.0